



# Inner Excellence

---

*hifi*AMT Tweeter • Hochtöner

Dieses Dokument ist ab sofort gültig.  
Alle vorherigen Preislisten verlieren damit ihre Gültigkeit.  
This document is effective immediately.  
All previous pricelists expire herewith.

Alle Preisangaben inklusive Umsatzsteuer (MwSt.) in der jeweiligen gesetzlichen Höhe.  
Irrtümer und Preisänderungen vorbehalten.  
All prices including the applicable taxes and duties in their respective statutory amount.  
Prices and specifications subject to change without notice.

Design & Layout Konrad Schaedle, Arrangé - Büro für Grafik und Design, Cologne  
Text & Tables Mirko Filke, Andreas Rullmann, Raimund Mundorf  
Bearbeitung Holger Kuban, 09/2024



RoHS konform (bleifrei) / RoHS compliant (lead-free)  
REACH konform / REACH compliant



Wir beziehen seit 2008 Ökostrom.  
We purchase clean eco-power since 2008.



Wir drucken ausschließlich auf recyceltem Papier.  
We use recycled paper only.

Mundorf EB GmbH

Liebigstr. 110  
50823 Köln • Germany

fon +49 221 977705-0  
fax +49 221 977705-99

info@mundorf.com  
www.mundorf.com

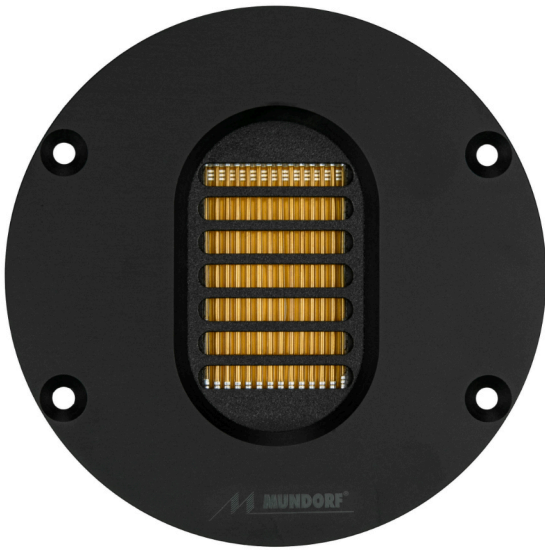
Die vorliegenden technischen Angaben wurden mit allergrößter Sorgfalt erstellt. Da Fehler trotzdem nicht auszuschließen sind, weisen wir darauf hin, dass für eventuelle Folgen, die auf fehlerhafte Angaben zurückgehen, von der Mundorf EG GmbH weder eine Garantie noch juristische Verantwortung oder Haftung übernommen wird.  
Note: the technical information present was produced with great care. Nevertheless, since errors cannot be ruled out, we would like to point out that Mundorf EB GmbH does not guarantee the information or take legal responsibility or liability for possible consequences that can be attributed to incorrect information.

Alle Rechte des Nachdrucks, der fotomechanischen Wiedergabe oder Übersetzung, auch auszugsweise, vorbehalten.  
All rights of reprint, of photomechanical reproduction or translation, including excerpts, reserved.

Technische Änderungen behalten wir uns jederzeit vor.  
Subject to technical changes by us at any time.

© Copyright Mundorf EB GmbH 2018, 2024

Inhaltsverzeichnis Content	Seite Page
<b>Einführung</b> Introduction	30 30
<b><i>hifi</i>AMT Hochtöner Concert</b> <b><i>hifi</i>AMT Tweeters Concert</b>	
AMT19CM1.1-C	4
AMT21CM2.1-C	6
AMT23CM1.1-C	8
AMT23CM1.1-R	10
AMT25CM1.1-R	12
AMT25CS2.1-R	14
AMT29CM1.1-R	16
<b><i>hifi</i>AMT Hochtöner Dipol</b> <b><i>hifi</i>AMT Tweeters Dipole</b>	
AMT17D2.2	18
AMT23D6.1-C	20
AMT23D6.1-R	22
AMT25D1.1	24
AMT25D6.1-R	26
AMT27D1.1	28
<b>Weitere MUNDORF Produkt Gruppen</b> <b>Further MUNDORF Product Groups</b>	31 31
<b>Impressum</b> Imprint	2 2

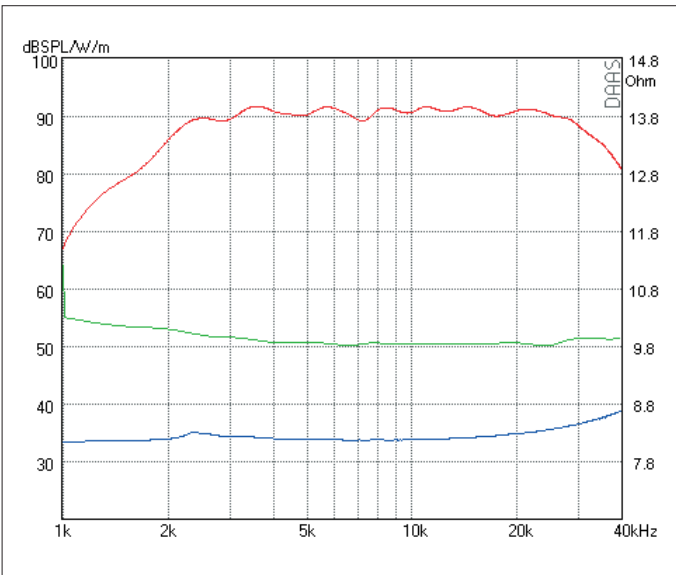


High End AMT für 3-Weg Systeme. Die 1.1-Variante ist für die Anwendung mit einer 12dB- Weiche optimiert und ermöglicht so eine besonders tiefe Übernahmefrequenz.

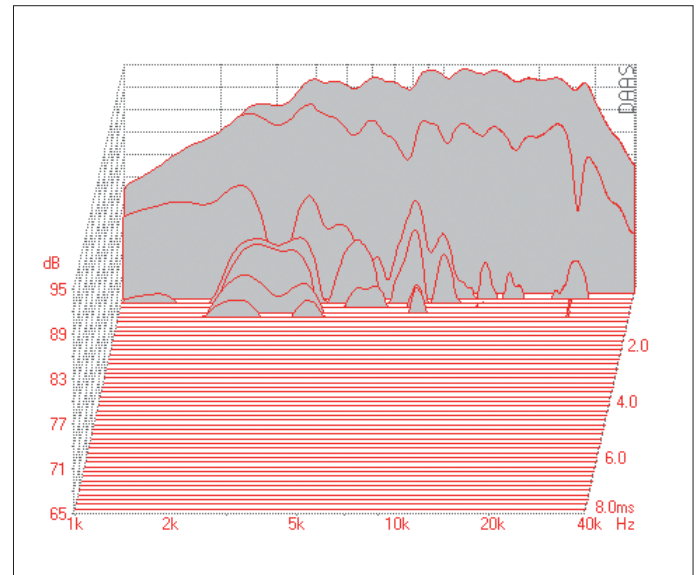
- Sehr niedrige Verzerrungen
- Sehr flache Impedanzkurve
- Gutes Rundumstrahlverhalten

High End AMT for 3-way systems. The 1.1 version is optimized for use with a 12dB crossover, allowing a particularly low crossover frequency.

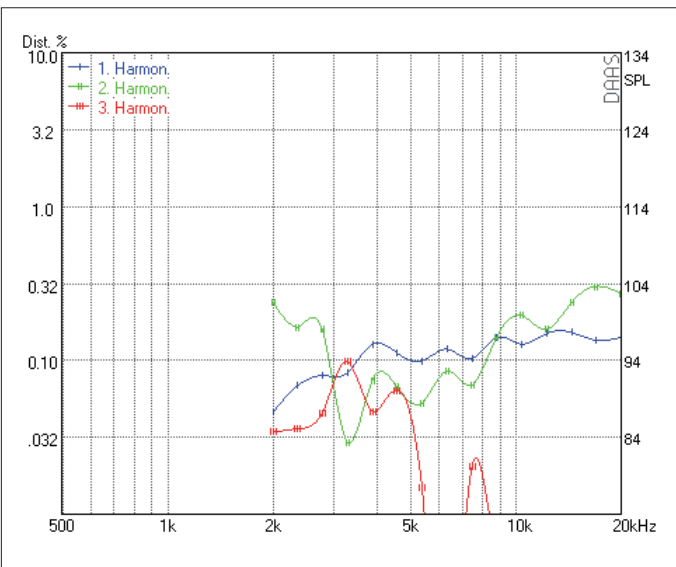
- Very low distortion
- Very flat impedance curve
- Wide spread directivity



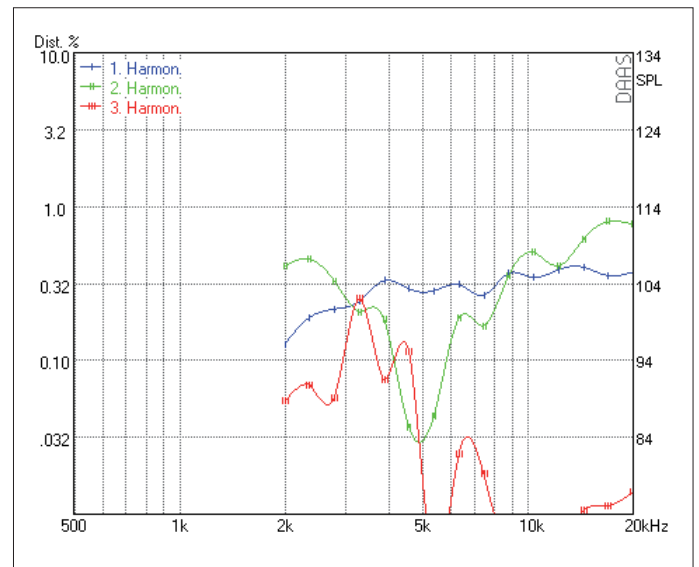
SPL 2.83 V - Phase - Impedance



Waterfall

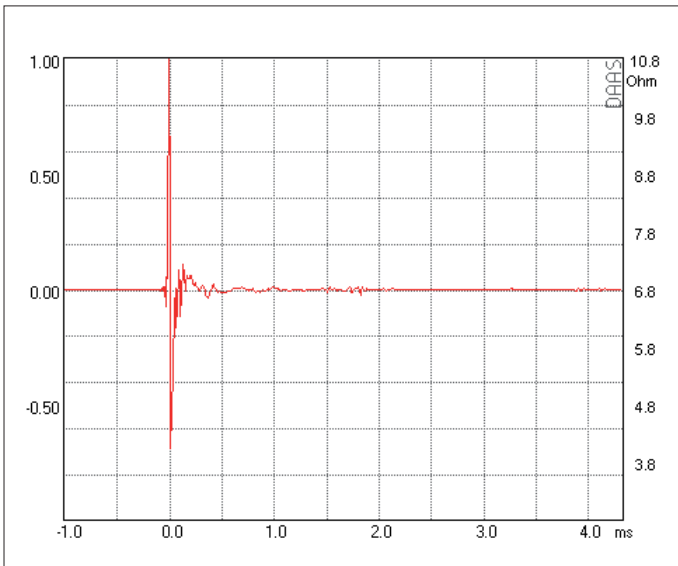
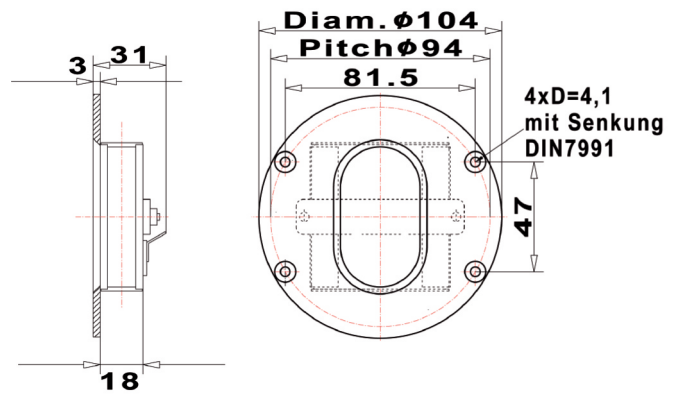


Harmonic Distortion 2.83 V

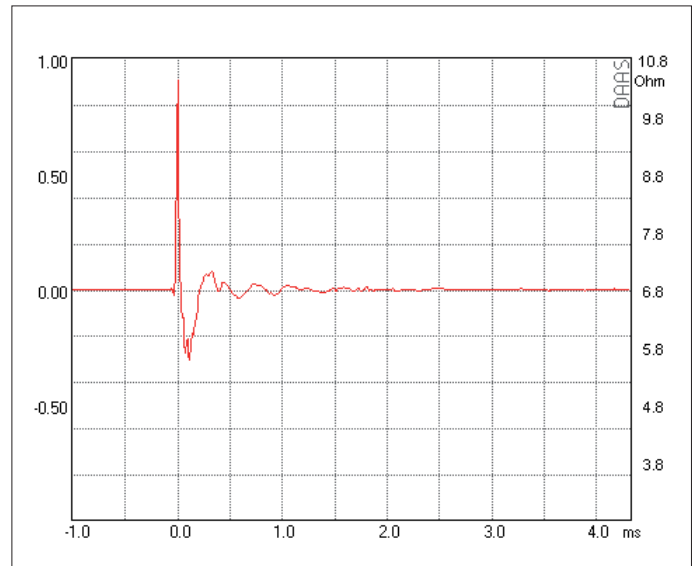


Harmonic Distortion 105 dB

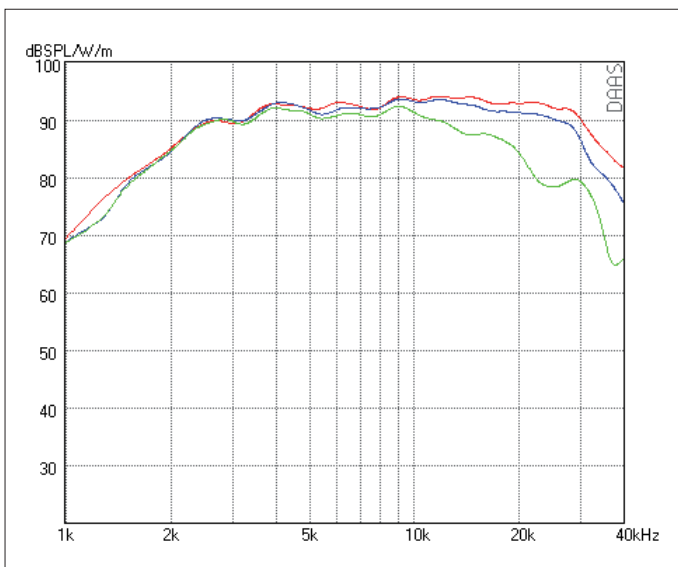
RESISTANCE	NOMINAL 8 OHM
Zo 7.7 OHM • Zmin 7.5 OHM • RE 7.5 OHM	
SENSITIVITY @ 2.83 V	91 dB
FREQUENCY RESPONSE / -6 dB	2000 Hz – 35 kHz
POWER HANDLING	120 W
RESONANCE FREQUENCY / FS	2300 Hz
RECOMMENDED CROSSOVER / 6 dB	3100 Hz
RECOMMENDED CROSSOVER / 12 dB	2800 Hz
DISPERSION HORIZONTAL / 15 kHz / -6 dB	65°
DIAPHRAGM AREA	1260 mm <sup>2</sup>
MAGNET MATERIAL	NEODYMIUM
FACE PLATE	3 mm Anodized Aluminum



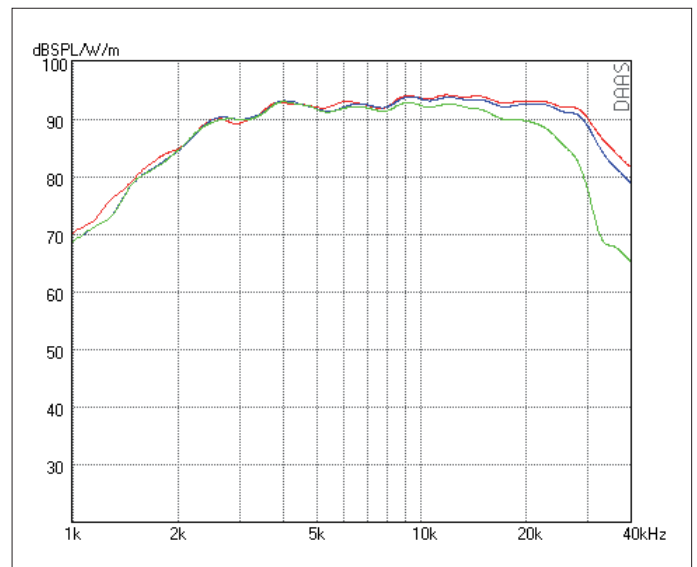
Impulse Response



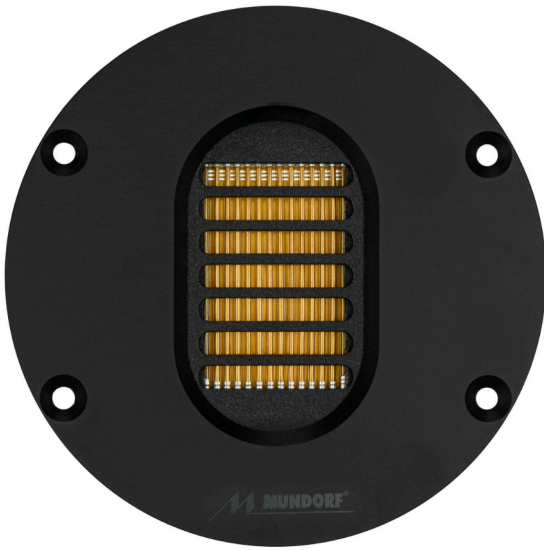
Step Response



SPL HORIZONTAL 0° - 15° - 30°



SPL VERTIKAL 0° - 5° - 15°

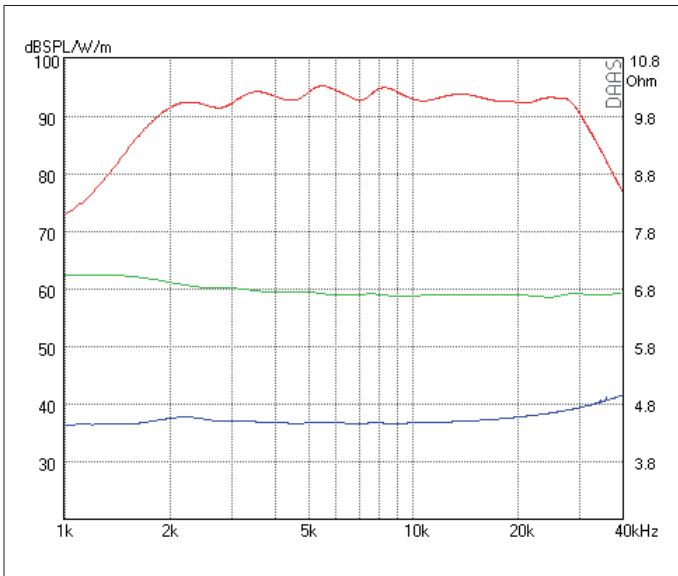


High End AMT für 2-Weg Systeme. Aufgrund der geringen Bauhöhe ist die vertikale Bündelung am geringsten und ist damit im Abstrahlverhalten dem einer Kalotte am ähnlichsten.

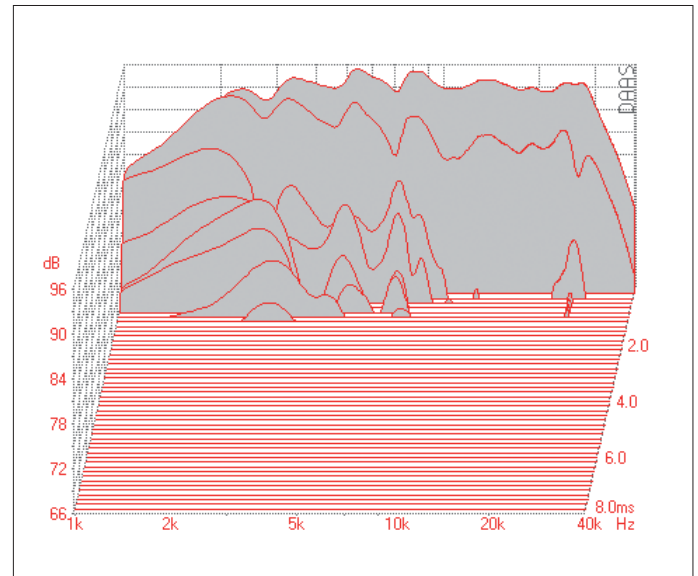
- Sehr niedrige Verzerrungen • Sehr flache Impedanzkurve
- Gutes Rundumstrahlverhalten • Tiefe Trennfrequenz

High End AMT for 2-way systems. Due to the low height is the vertical dispersion is high and thus the radiation is similar to a dome tweeter.

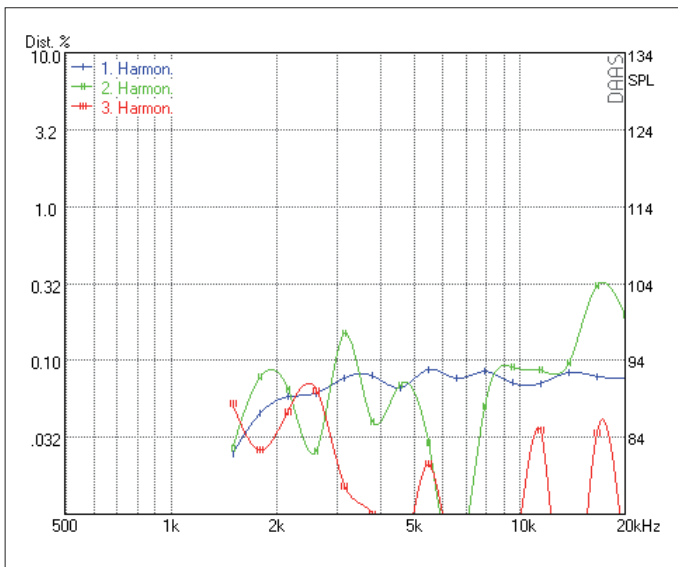
- Very low distortion • Very flat impedance curve
- Wide spread directivity • Low x-over frequency



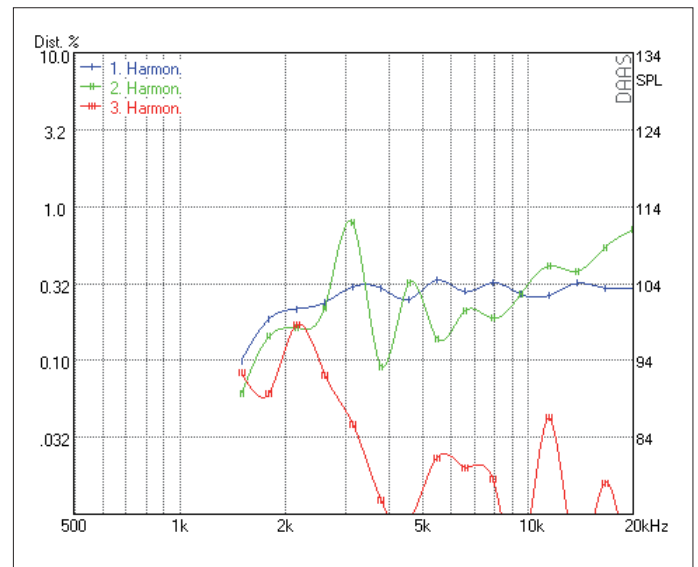
SPL 2.83 V - Phase - Impedance



Waterfall

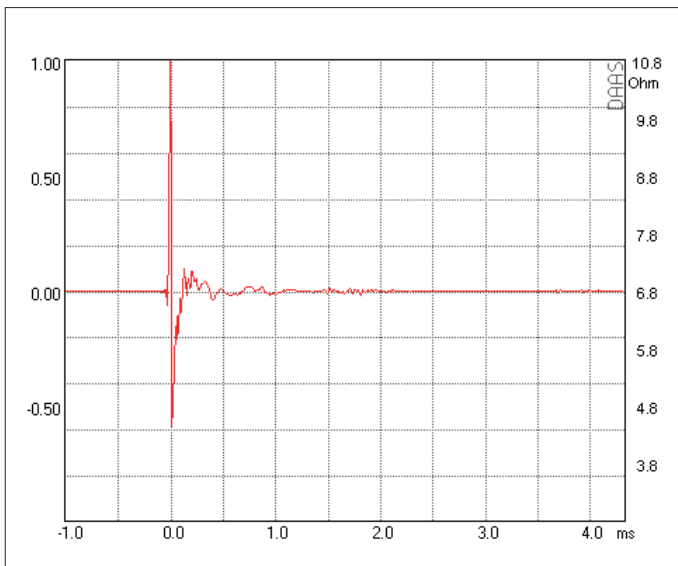
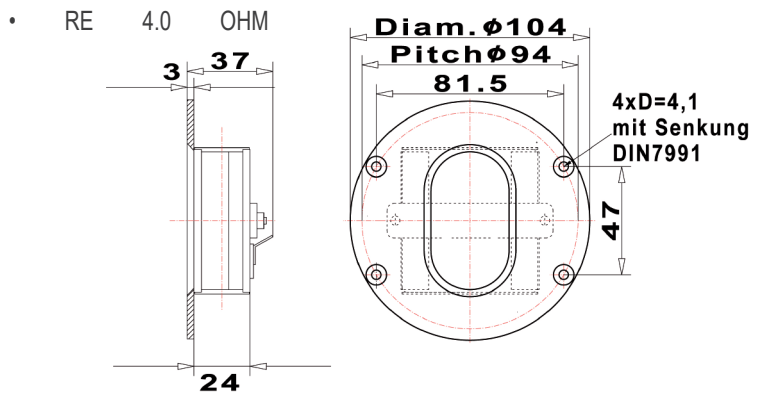


Harmonic Distortion 2.83 V

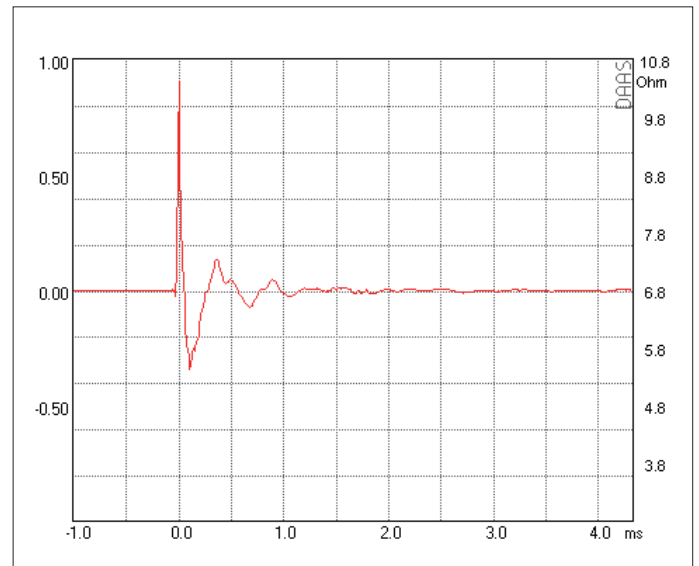


Harmonic Distortion 105 dB

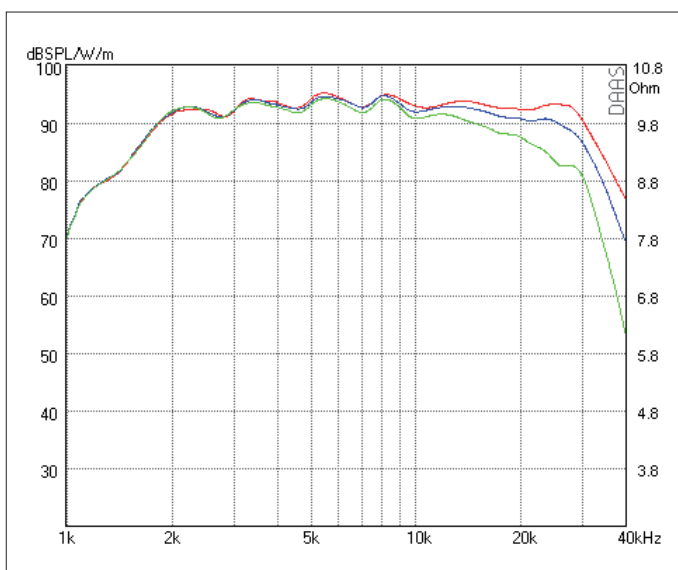
RESISTANCE		NOMINAL 4 OHM	
Zo	4.2 OHM	Zmin	4.0 OHM
SENSITIVITY @ 2.83 V		93 dB	
FREQUENCY RESPONSE / -6 dB		1700 Hz – 32 kHz	
POWER HANDLING		125 W	
RESONANCE FREQUENCY / FS		2300 Hz	
RECOMMENDED CROSSOVER / 6 dB		3000 Hz	
RECOMMENDED CROSSOVER / 12 dB		2500 Hz	
DISPERSION HORIZONTAL / 15 kHz / -6 dB		65°	
DIAPHRAGM AREA		1260 mm <sup>2</sup>	
MAGNET MATERIAL		NEODYMIUM	
FACE PLATE		3 mm Anodized Aluminum	



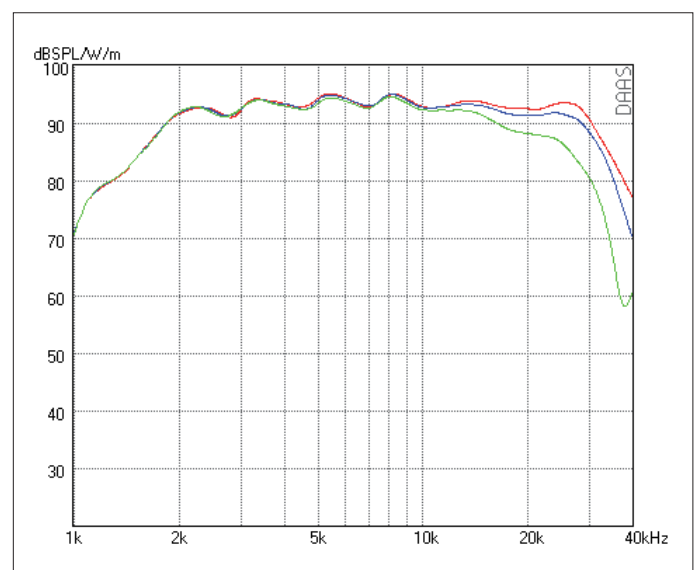
Impulse Response



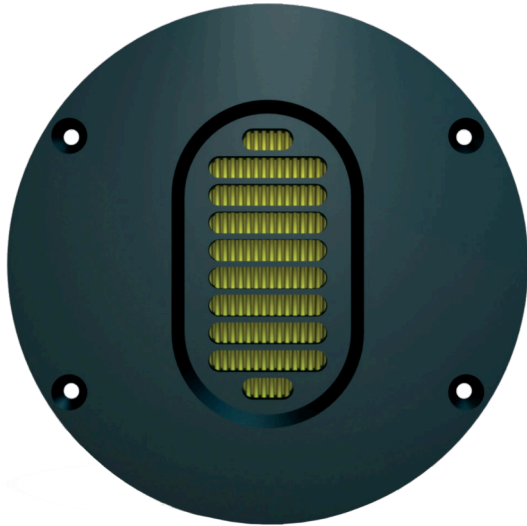
Step Response



SPL HORIZONTAL 0° - 15° - 30°



SPL VERTIKAL 0° - 5° - 15°

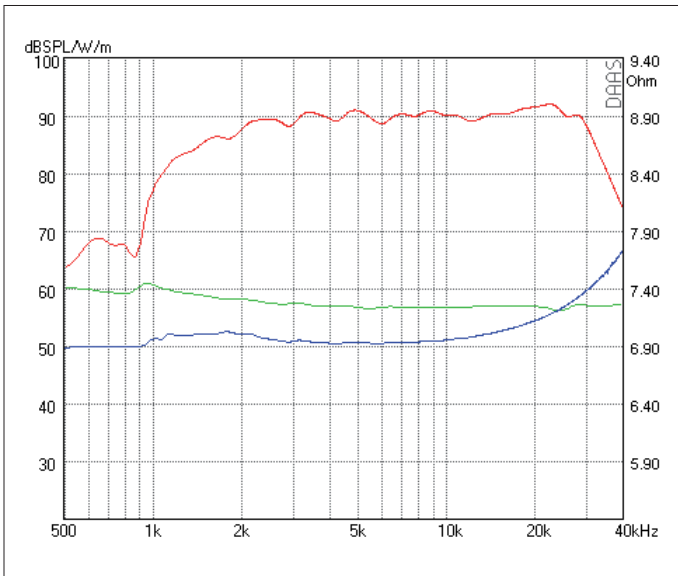


High End AMT für 2-Weg Systeme. Mit seinen Wirkungsgrad von 90 dB benötigt er die geringste Pegelanpassung. Sein hoher Endschalldruck genügt höchsten Anforderungen.

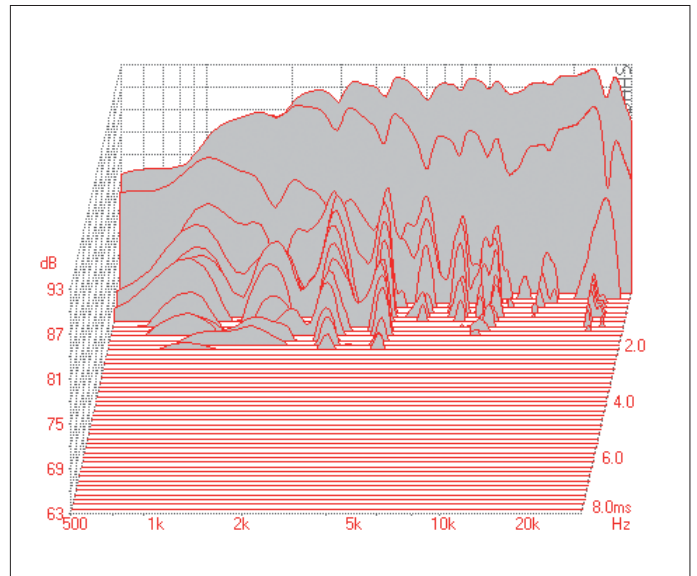
- Sehr niedrige Verzerrungen • Sehr flache Impedanzkurve
- Gutes Rundumstrahlverhalten • Tiefe Trennfrequenz

High End AMT for 2-way systems. With its efficiency of 90 dB this AMT needs almost no level adjustment. Its high SPLmax meets the highest requirements.

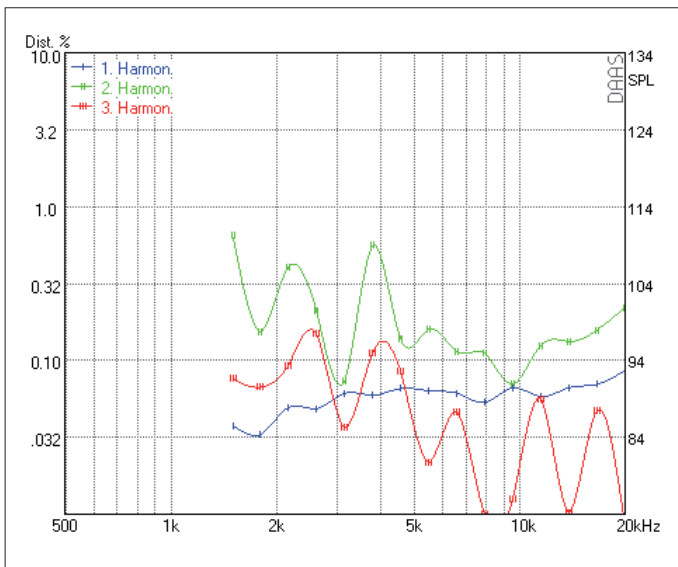
- Very low distortion • Very flat impedance curve
- Wide spread directivity • Low x-over frequency



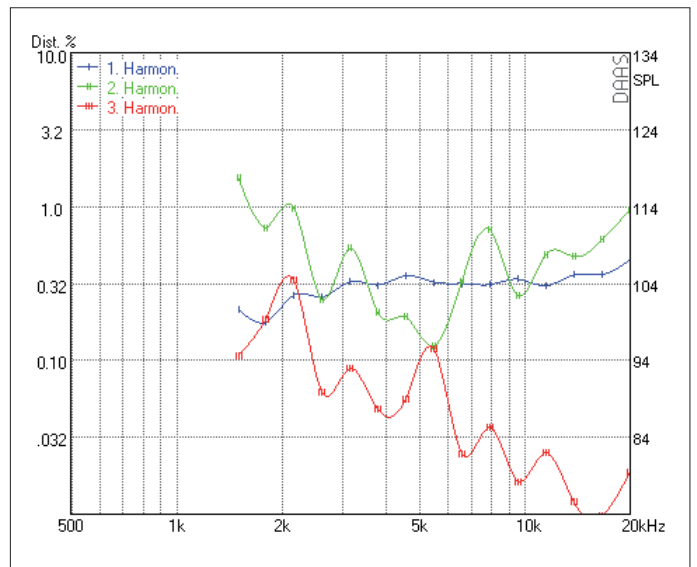
SPL 2.83 V - Phase - Impedance



Waterfall



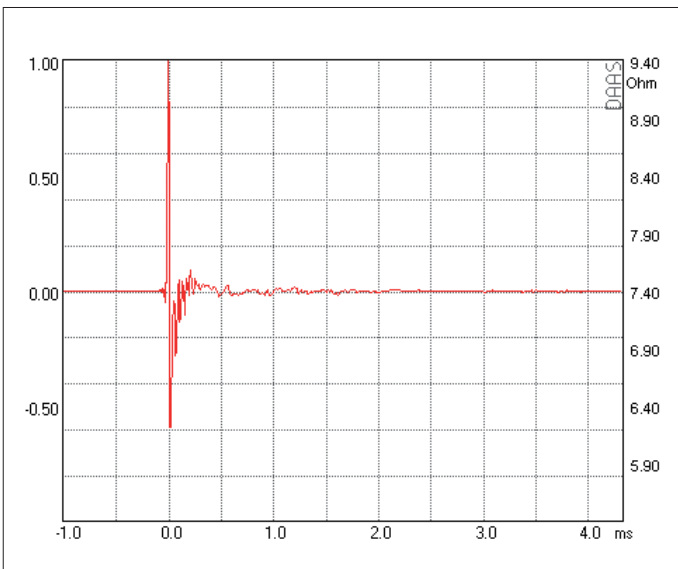
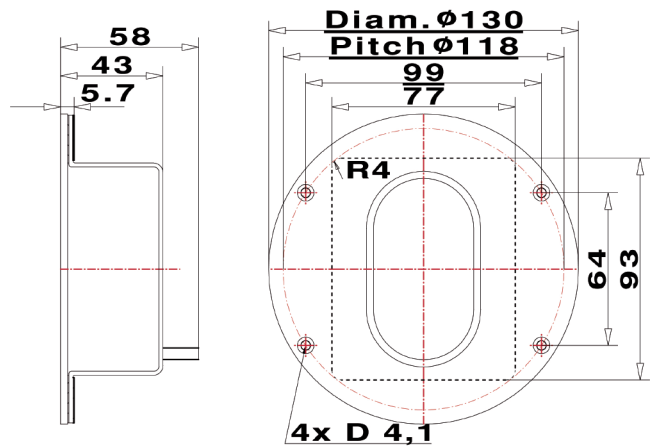
Harmonic Distortion 2.83 V



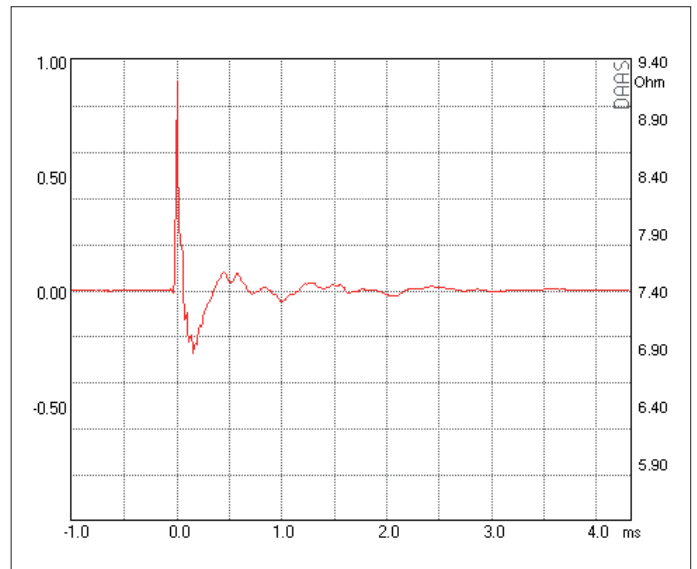
Harmonic Distortion 105 dB



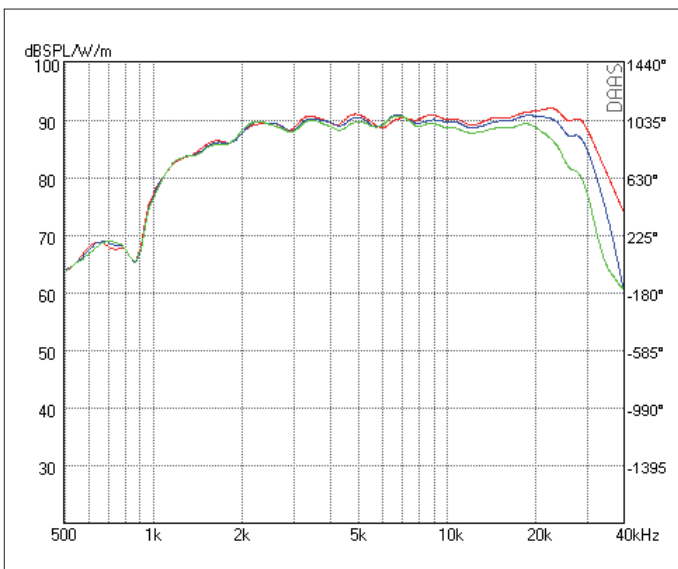
RESISTANCE	NOMINAL 6 OHM		
Zo 6.8 OHM • Zmin 6.6 OHM • RE 6.6 OHM			
SENSITIVITY @ 2.83 V	90 dB		
FREQUENCY RESPONSE / -6 dB	1300 Hz – 33 kHz		
POWER HANDLING	125 W		
RESONANCE FREQUENCY / FS	1700 Hz		
RECOMMENDED CROSSOVER / 6 dB	2700 Hz		
RECOMMENDED CROSSOVER / 12 dB	2200 Hz		
DISPERSION HORIZONTAL / 15 kHz / -6 dB	60°		
DIAPHRAGM AREA	1755 mm <sup>2</sup>		
MAGNET MATERIAL	NEODYMIUM		
FACE PLATE	3 mm Anodized Aluminum		



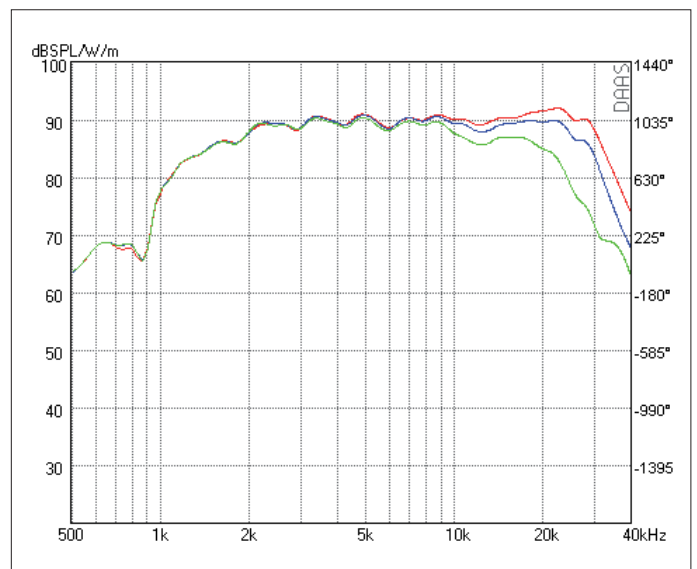
Impulse Response



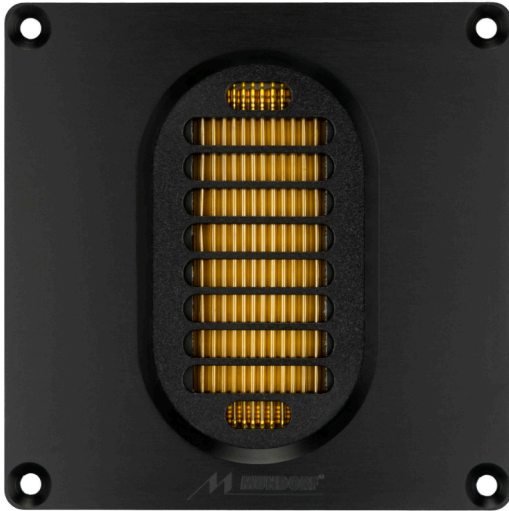
Step Response



SPL HORIZONTAL 0° - 15° - 30°



SPL VERTIKAL 0° - 5° - 15°

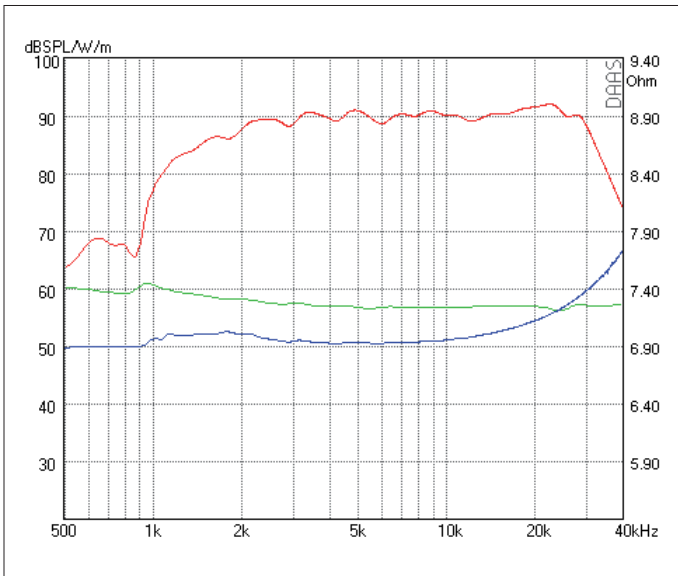


High End AMT für 2-Weg Systeme. Mit seinen Wirkungsgrad von 90 dB benötigt er die geringste Pegelanpassung. Sein hoher Endschalldruck genügt höchsten Anforderungen.

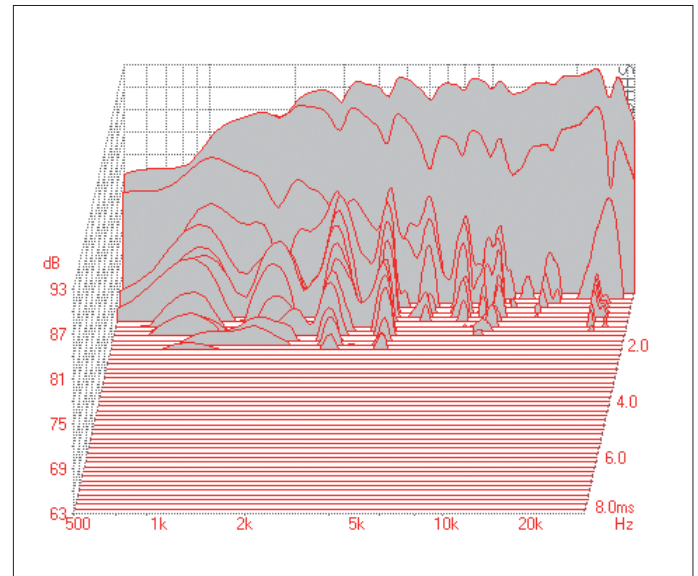
- Sehr niedrige Verzerrungen
- Sehr flache Impedanzkurve
- Gutes Rundumstrahlverhalten
- Tiefe Trennfrequenz

High End AMT for 2-way systems. With its efficiency of 90 dB this AMT needs almost no level adjustment. Its high SPLmax meets the highest requirements.

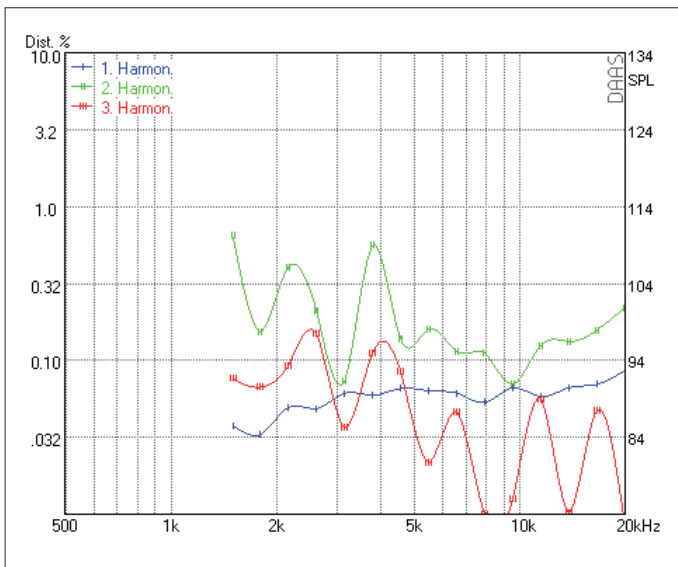
- Very low distortion
- Very flat impedance curve
- Wide spread directivity
- Low x-over frequency



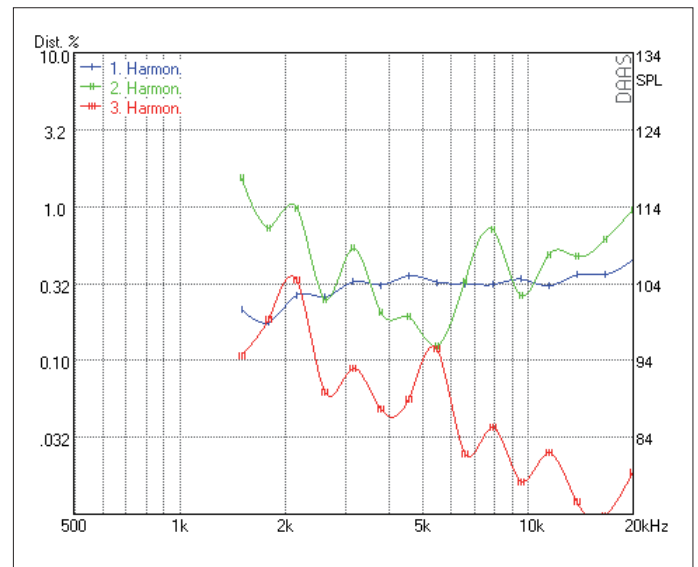
SPL 2.83 V - Phase - Impedance



Waterfall

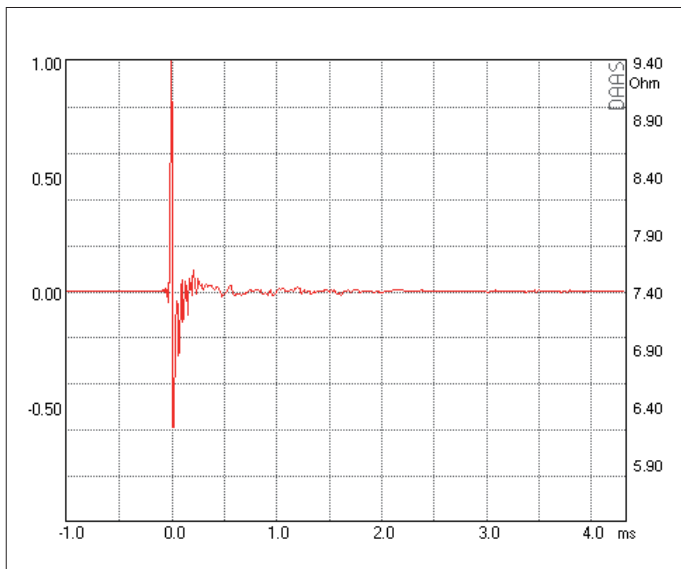
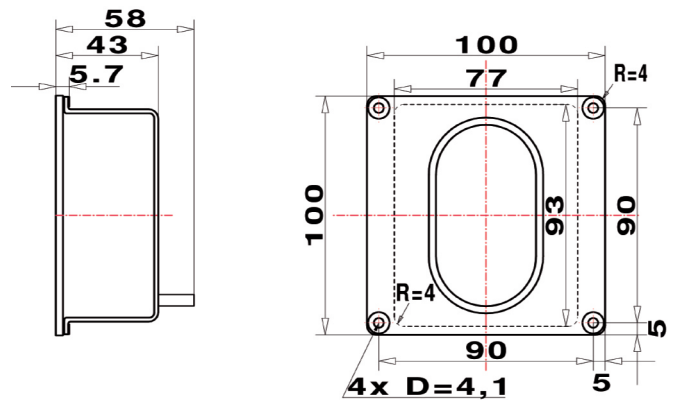


Harmonic Distortion 2.83 V

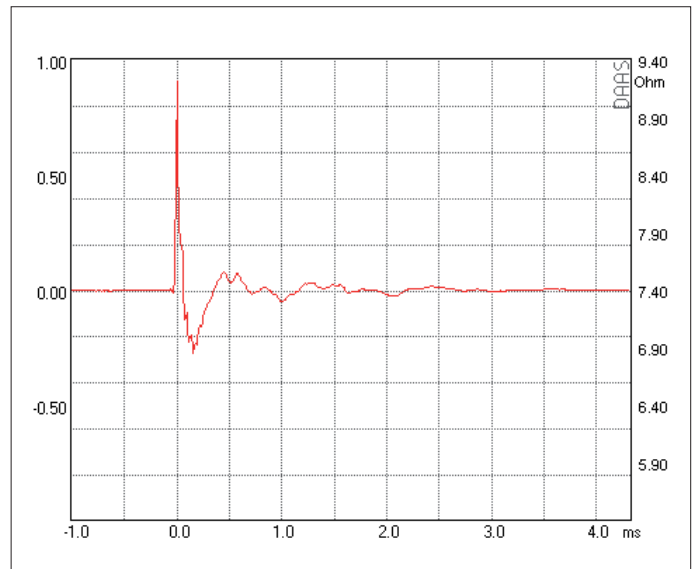


Harmonic Distortion 105 dB

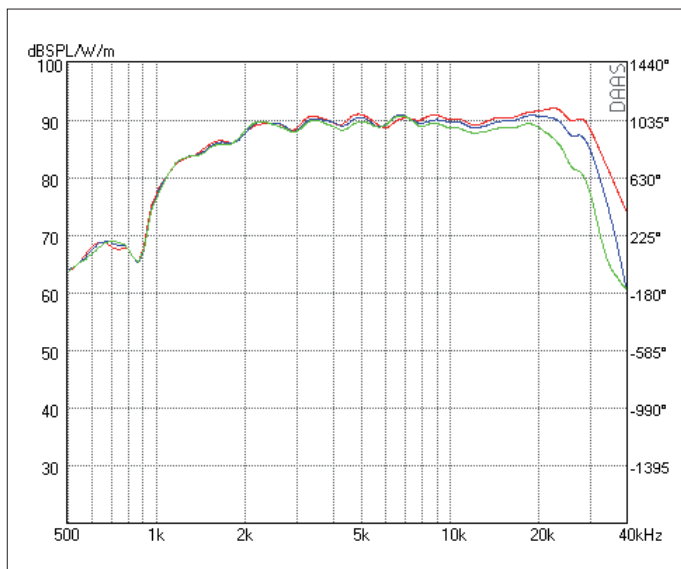
RESISTANCE	NOMINAL 6 OHM
Zo 6.8 OHM • Zmin 6.6 OHM • RE 6.6 OHM	
SENSITIVITY @ 2.83 V	90 dB
FREQUENCY RESPONSE / -6 dB	1300 Hz – 33 kHz
POWER HANDLING	125 W
RESONANCE FREQUENCY / FS	1700 Hz
RECOMMENDED CROSSOVER / 6 dB	2700 Hz
RECOMMENDED CROSSOVER / 12 dB	2200 Hz
DISPERSION HORIZONTAL / 15 kHz / -6 dB	60°
DIAPHRAGM AREA	1755 mm <sup>2</sup>
MAGNET MATERIAL	NEODYMIUM
FACE PLATE	3 mm Anodized Aluminum



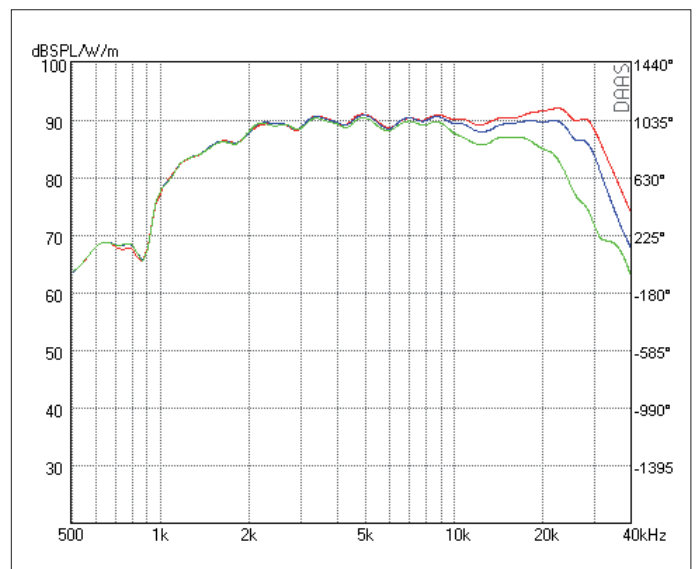
Impulse Response



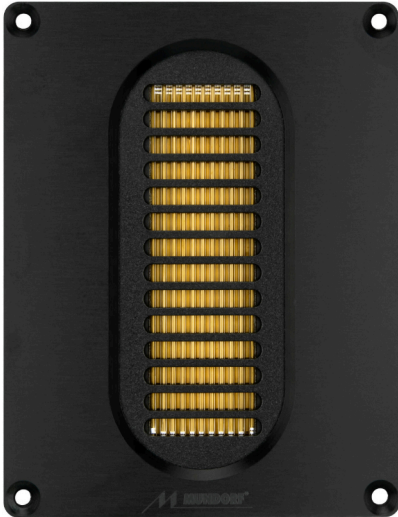
Step Response



SPL HORIZONTAL 0° - 15° - 30°



SPL VERTIKAL 0° - 5° - 15°

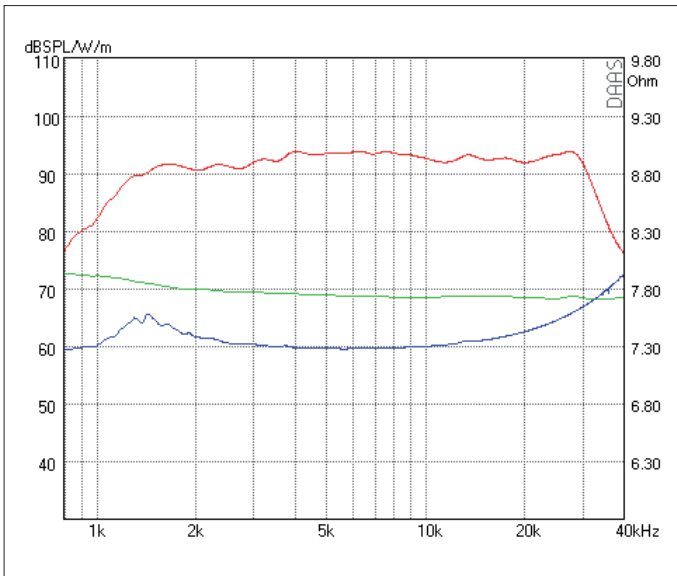


High End AMT für 2-Weg Systeme. Der 25CM1.1 verbindet eine starke vertikale Bündelung mit einem breiten horizontal Abstrahlverhalten. Ideal für schallharte Böden und Decken. Gleichzeitig ist es der AMT mit der niedrigsten Übernahmefrequenz.

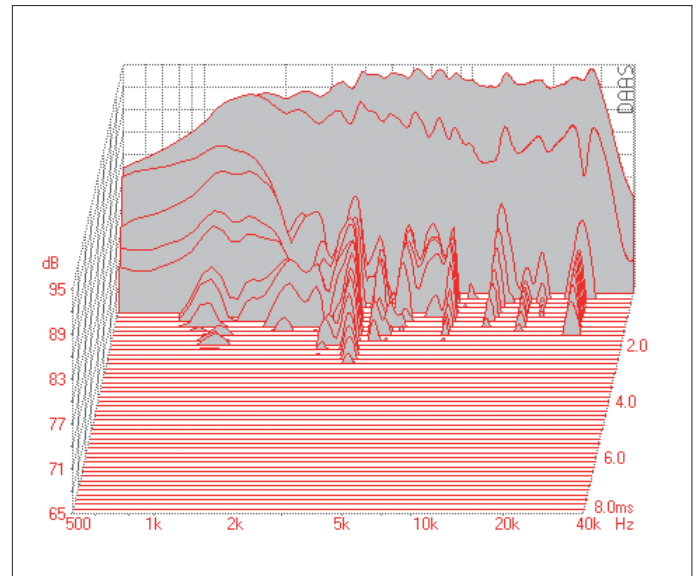
- Sehr niedrige Verzerrungen • Sehr flache Impedanzkurve
- Sehr tiefe Trennfrequenz • Ausgeprägte vertikale Bündelung

High End AMT for 2-way systems. The 25CM1.1 combines a strong vertical directivity with a wide horizontal dispersion. Ideal for rooms with reverberant ceilings and floors. It is also the AMT with the lowest crossover frequency.

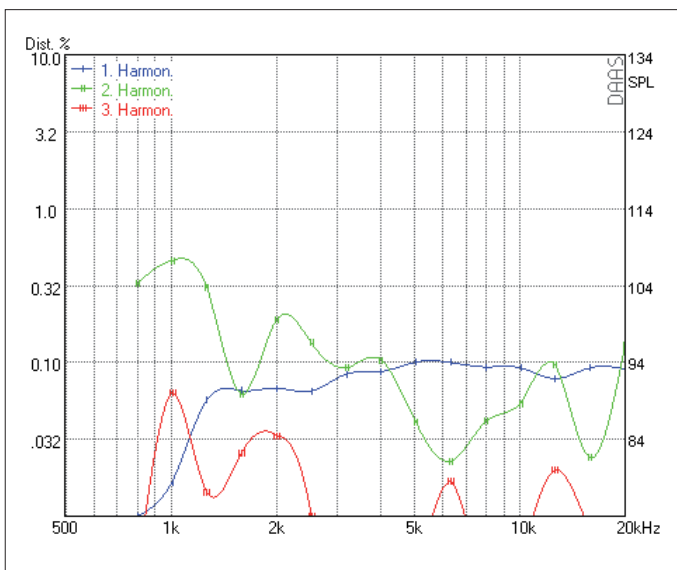
- Very low distortion • Very flat impedance curve
- Low x-over frequency • Pronounced vertical directivity



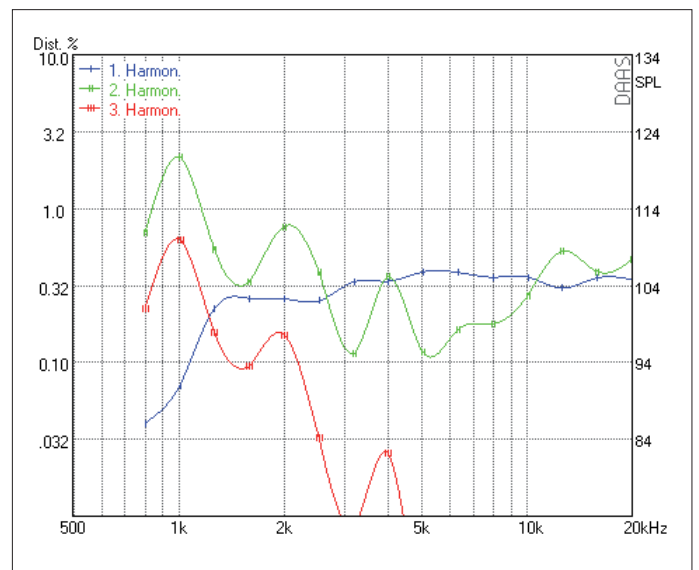
SPL 2.83 V - Phase - Impedance



Waterfall

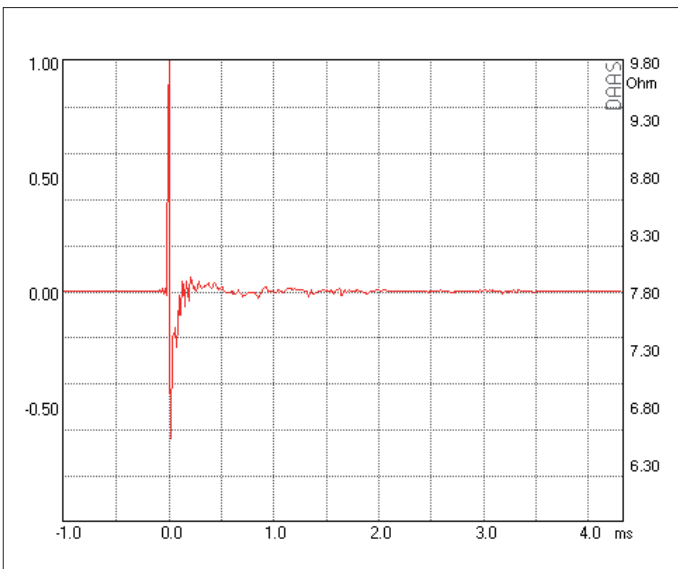
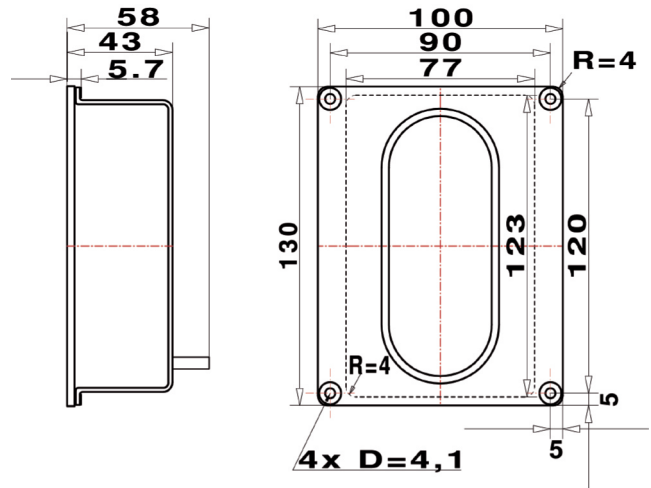


Harmonic Distortion 2.83 V

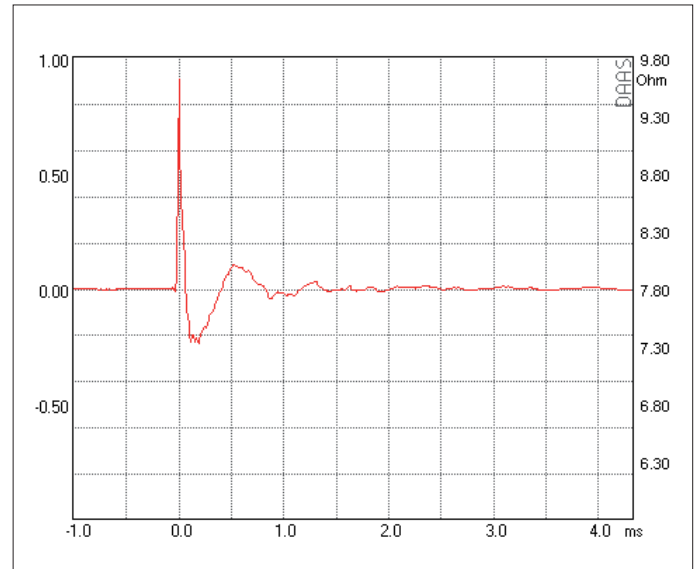


Harmonic Distortion 105 dB

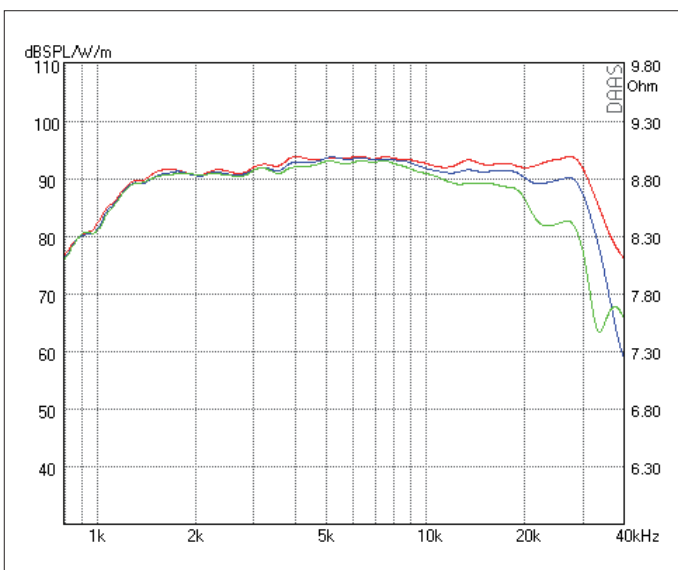
RESISTANCE	NOMINAL 6 OHM	
Zo 6.2 OHM • Zmin 5.9 OHM • RE 5.9 OHM		
SENSITIVITY @ 2.83 V	93 dB	
FREQUENCY RESPONSE / -6 dB	1200 Hz – 32 kHz	
POWER HANDLING	210 W	
RESONANCE FREQUENCY / FS	1400 Hz	
RECOMMENDED CROSSOVER / 6 dB	2500 Hz	
RECOMMENDED CROSSOVER / 12 dB	2000 Hz	
DISPERSION HORIZONTAL / 15 kHz / -6 dB	70°	
DIAPHRAGM AREA	6464 mm <sup>2</sup>	
MAGNET MATERIAL	NEODYMIUM	
FACE PLATE	3 mm Anodized Aluminum	



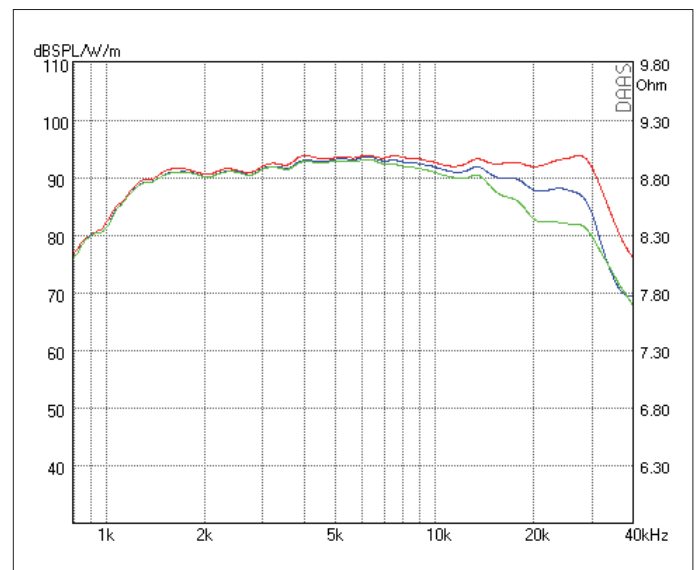
Impulse Response



Step Response



SPL HORIZONTAL 0° - 15° - 30°



SPL VERTIKAL 0° - 5° - 15°

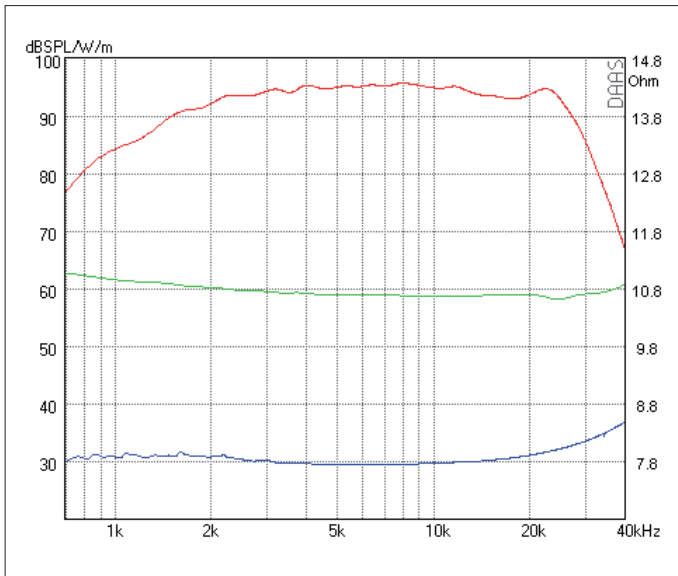


High End AMT für 2-Weg Systeme. Der 25CS2.1 verbindet eine starke vertikale Bündelung mit einer gleichfalls starken horizontalen Bündelung. Ideal für große D'Appolito- Systeme und modern eingerichtete Räume mit überwiegend schallharten Flächen. Die Empfindlichkeit von 95 dB macht ihn besonders geeignet für Röhrenfreunde.

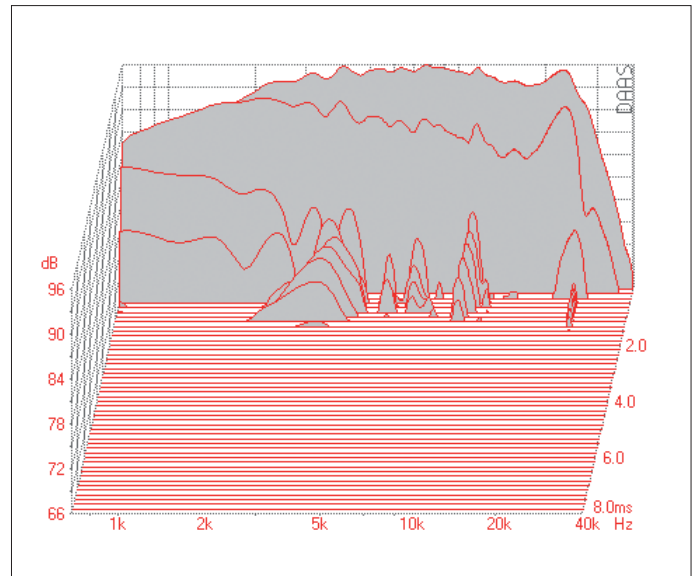
- Sehr niedrige Verzerrungen • Sehr flache Impedanzkurve • Tiefe Trennfrequenz • Ausgeprägte Bündelung • Hoher Wirkungsgrad

High End AMT for 2-way systems. The 25CS2.1 combines a strong vertical directivity with an equally strong horizontal directivity. Ideal for D'Appolito systems and modern rooms with reverberantsurfaces. The sensitivity of 95 dB makes it particularly suitable for tube friends.

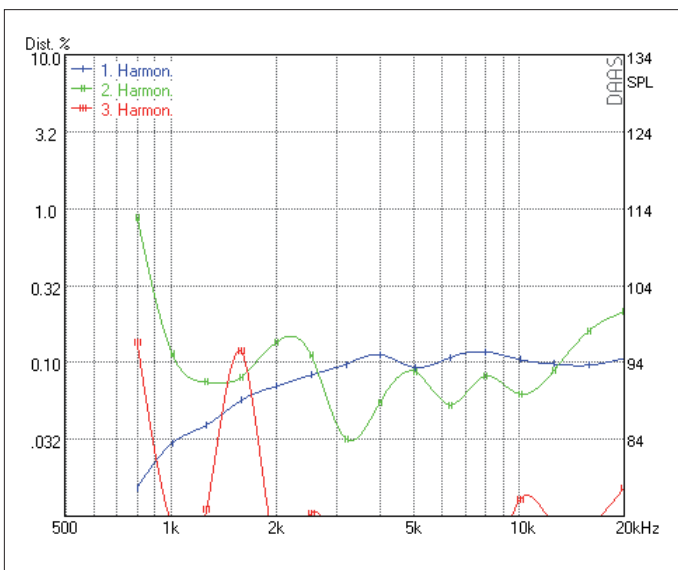
- Very low distortion • Very flat impedance curve • Low x-over frequency • Pronounced vertical directivity • High sensitivity



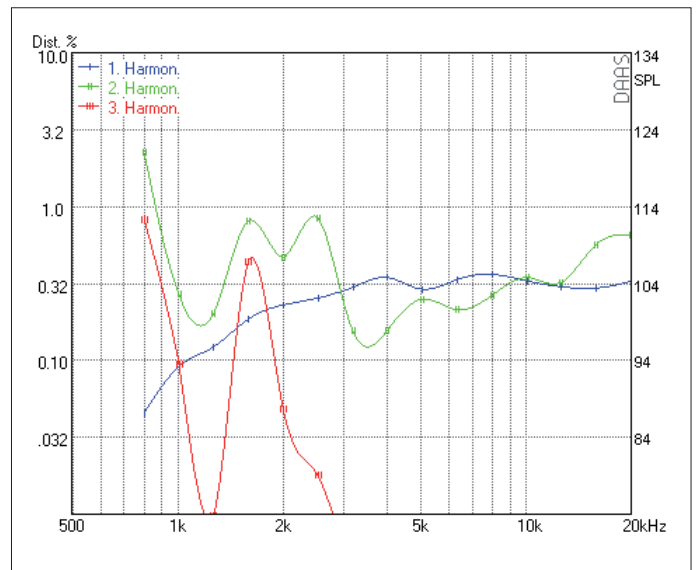
SPL 2.83 V - Phase - Impedance



Waterfall

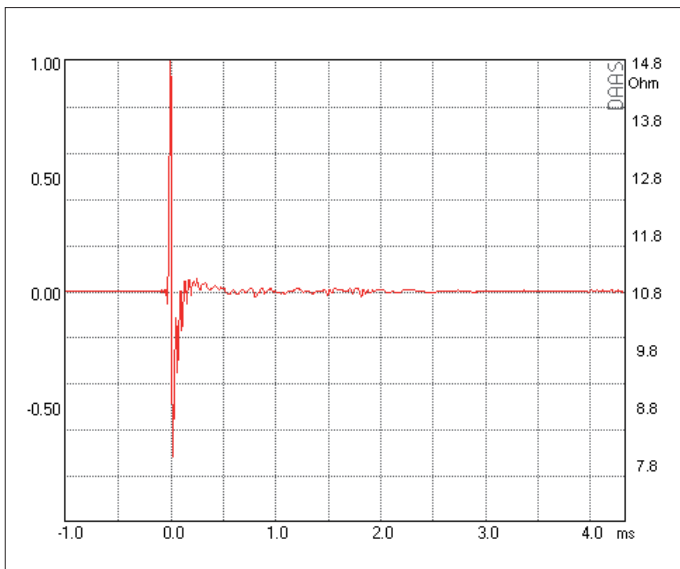
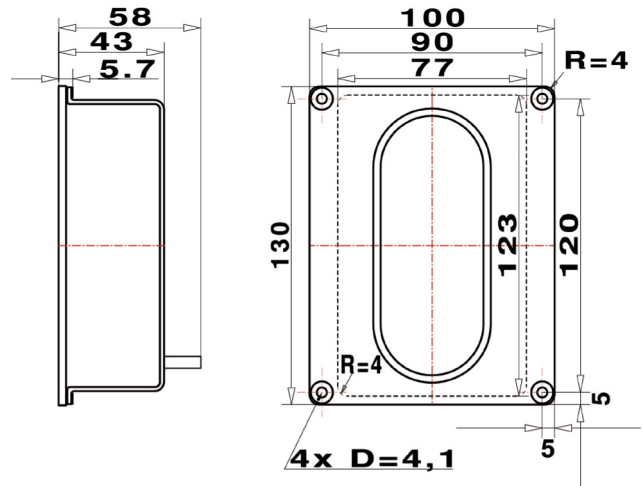


Harmonic Distortion 2.83 V

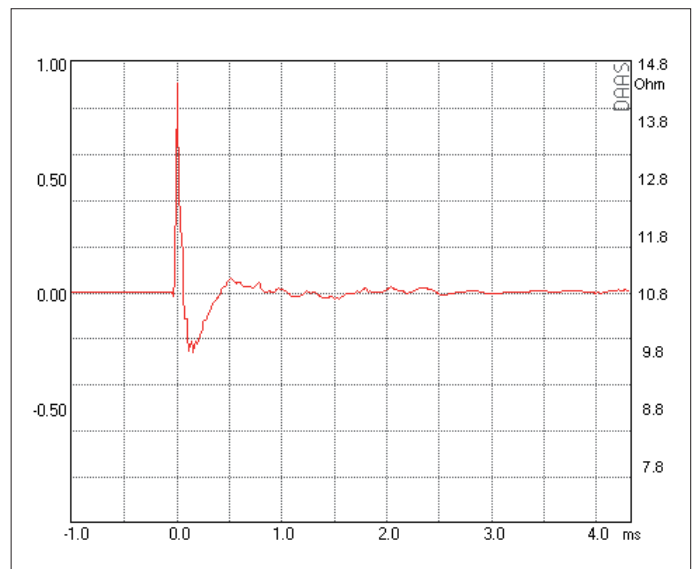


Harmonic Distortion 105 dB

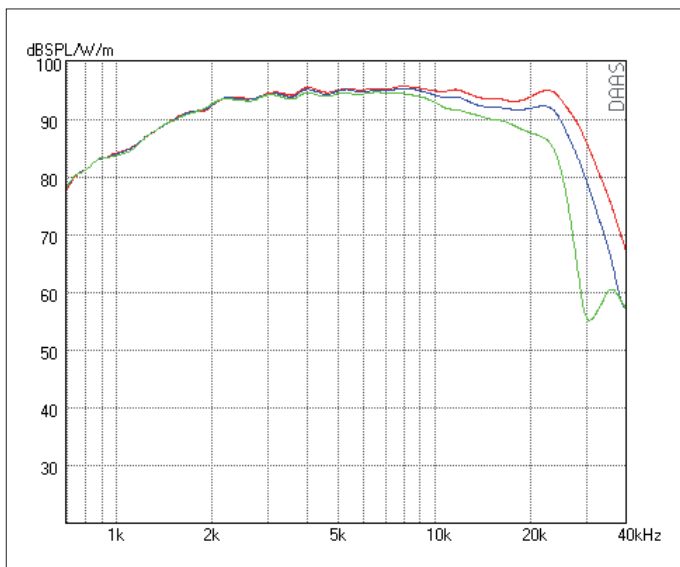
RESISTANCE	NOMINAL 8 OHM		
Zo 7.8 OHM • Zmin 7.5 OHM • RE 7.5 OHM			
SENSITIVITY @ 2.83 V	96 dB		
FREQUENCY RESPONSE / -6 dB	1600 Hz – 27 kHz		
POWER HANDLING	230 W		
RESONANCE FREQUENCY / FS	1100 Hz		
RECOMMENDED CROSSOVER / 6 dB	2000 Hz		
RECOMMENDED CROSSOVER / 12 dB	2000 Hz		
DISPERSION HORIZONTAL / 15 kHz / -6 dB	60°		
DIAPHRAGM AREA	6464 mm <sup>2</sup>		
MAGNET MATERIAL	NEODYMIUM		
FACE PLATE	3 mm Anodized Aluminum		



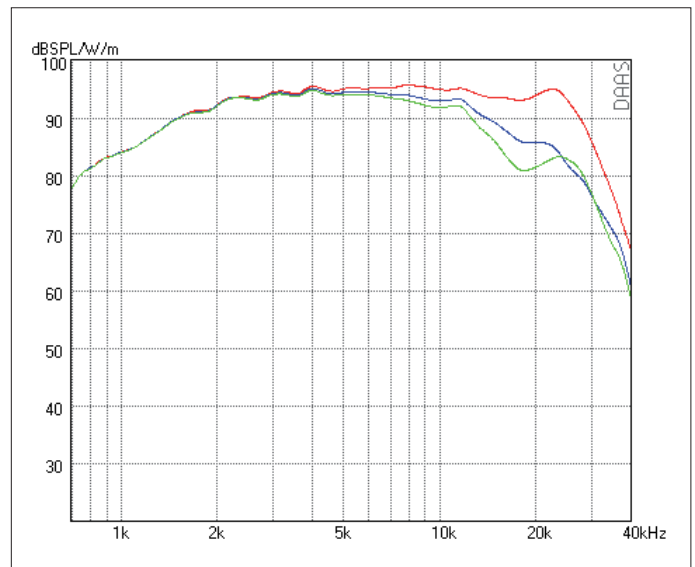
Impulse Response



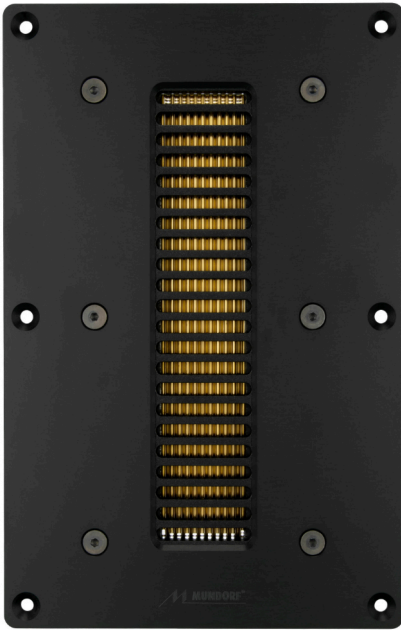
Step Response



SPL HORIZONTAL 0° - 15° - 30°



SPL VERTIKAL 0° - 5° - 15°

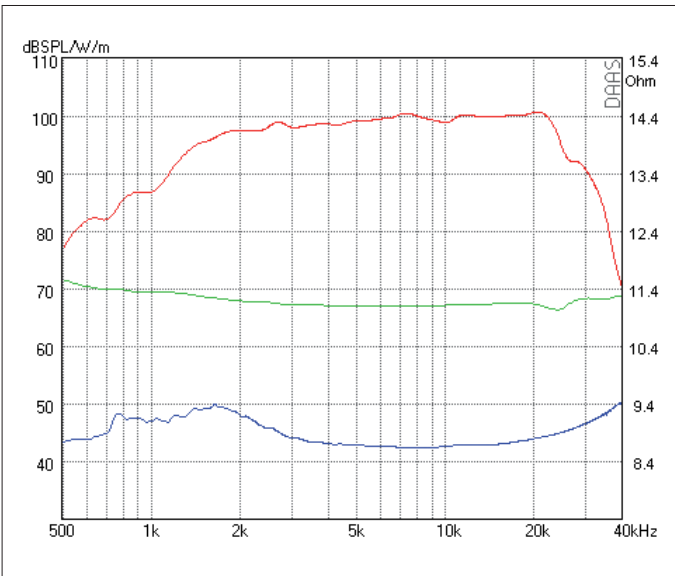


High End AMT für 2-Weg Systeme. Die optimale Synthese zwischen Kleinbeschallung und High- End- HiFi. Mit 100 dB an 8 Ohm ist er ideal für Eintakttröhren-Freunde. 6 dB- Filter- optimiert.

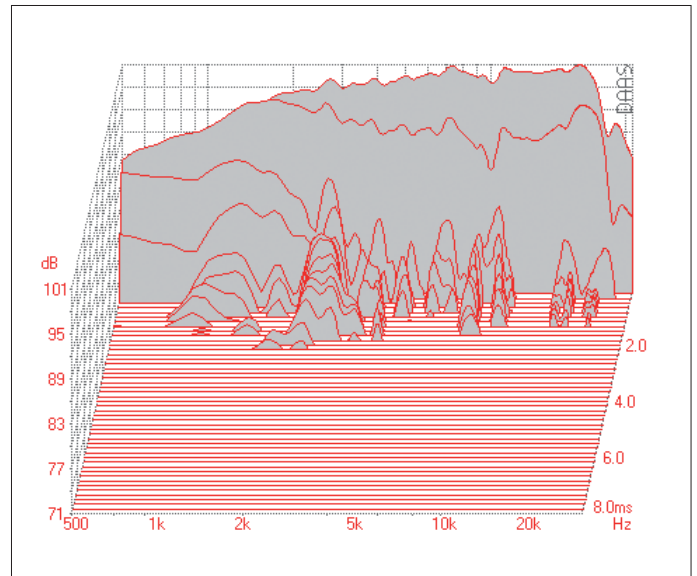
- Sehr niedrige Verzerrungen • Sehr flache Impedanzkurve
- Tiefe Trennfrequenz • Ausgeprägte Bündelung
- 100 dB Empfindlichkeit

High End AMT for 2-way systems. The optimal synthesis between small PA and the high-end HiFi. With 100 dB at 8 ohms, it is ideal for friends of single ended tube amps. Optimized 6 dB filters.

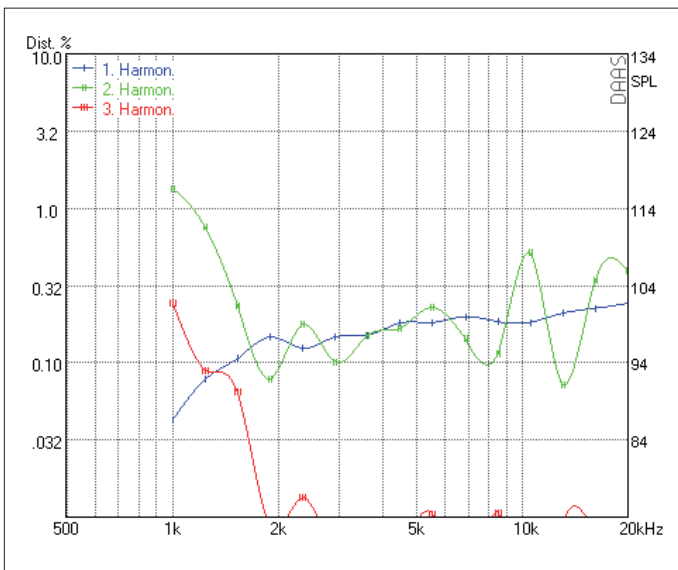
- Very low distortion • Very flat impedance curve
- Low x-over frequency • Pronounced directivity
- 100 dB sensitivity



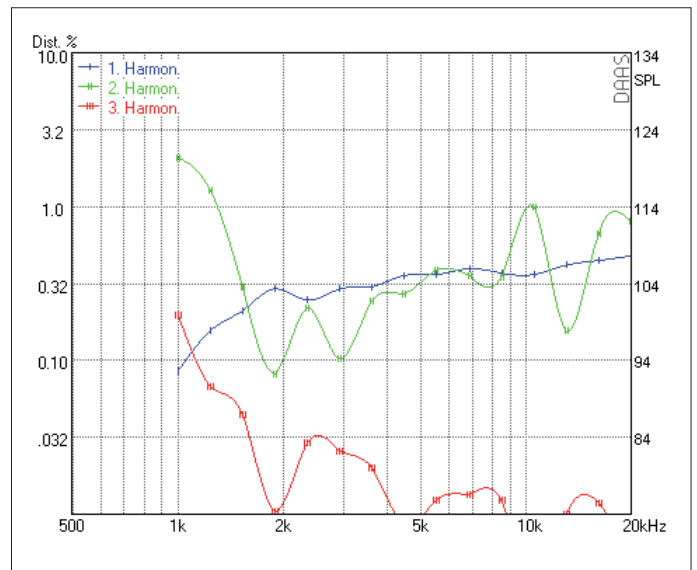
SPL 2.83 V - Phase - Impedance



Waterfall



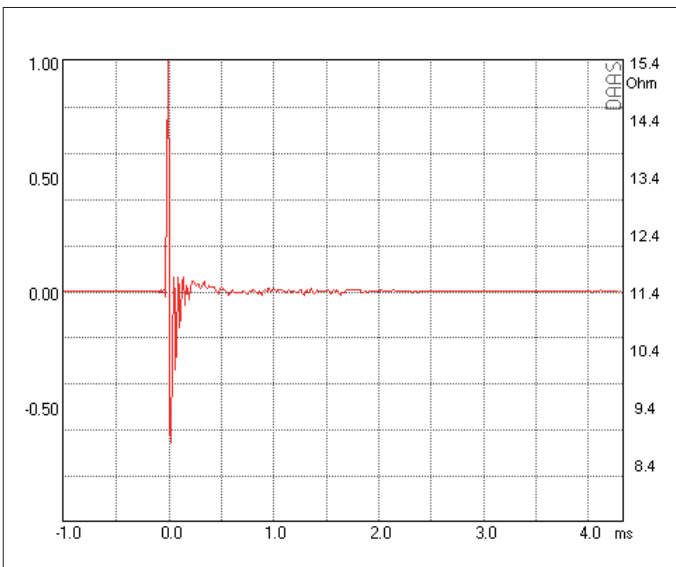
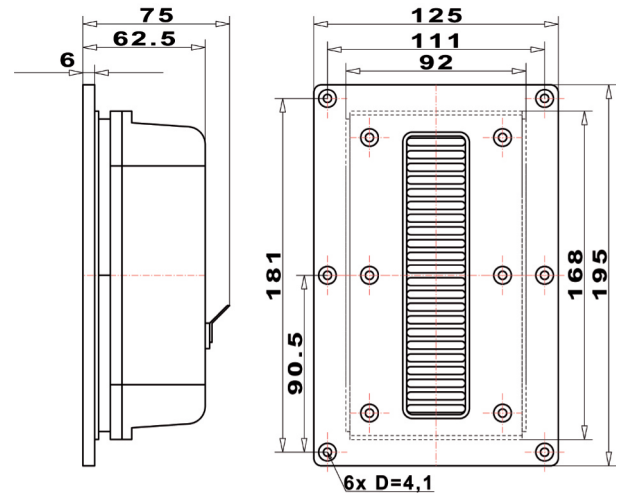
Harmonic Distortion 2.83 V



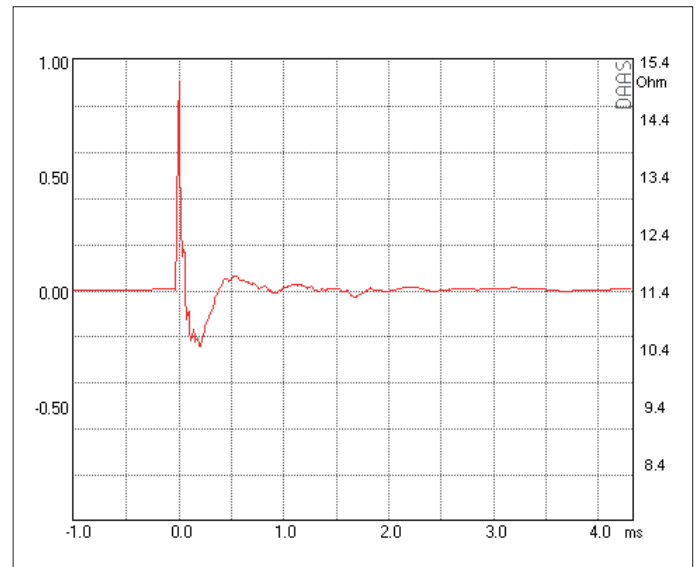
Harmonic Distortion 105 dB



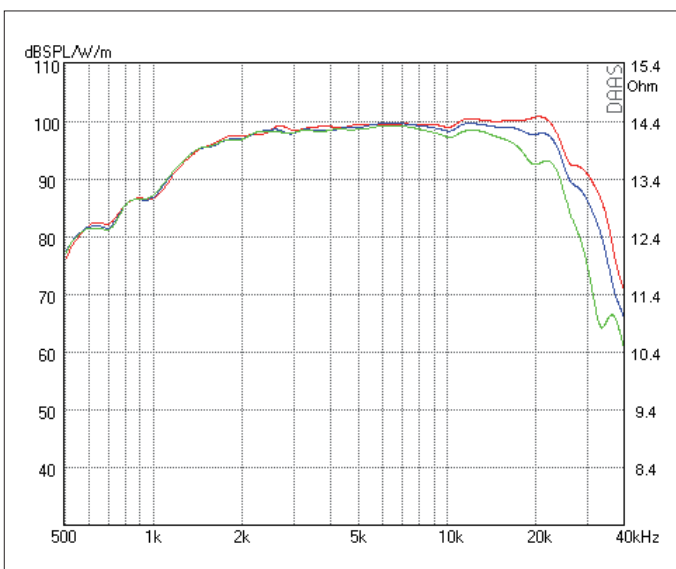
RESISTANCE	NOMINAL 8 OHM		
Zo 8.9 OHM • Zmin 8.1 OHM • RE 8.1 OHM			
SENSITIVITY @ 2.83 V	100 dB		
FREQUENCY RESPONSE / -6 dB	1350 Hz – 25 kHz		
POWER HANDLING	250 W		
RESONANCE FREQUENCY / FS	1500 Hz		
RECOMMENDED CROSSOVER / 6 dB	2200 Hz		
RECOMMENDED CROSSOVER / 12 dB	2000 Hz		
DISPERSION HORIZONTAL / 15 kHz / -6 dB	60°		
DIAPHRAGM AREA	6515 mm <sup>2</sup>		
MAGNET MATERIAL	NEODYMIUM		
FACE PLATE	3 mm Anodized Aluminum		



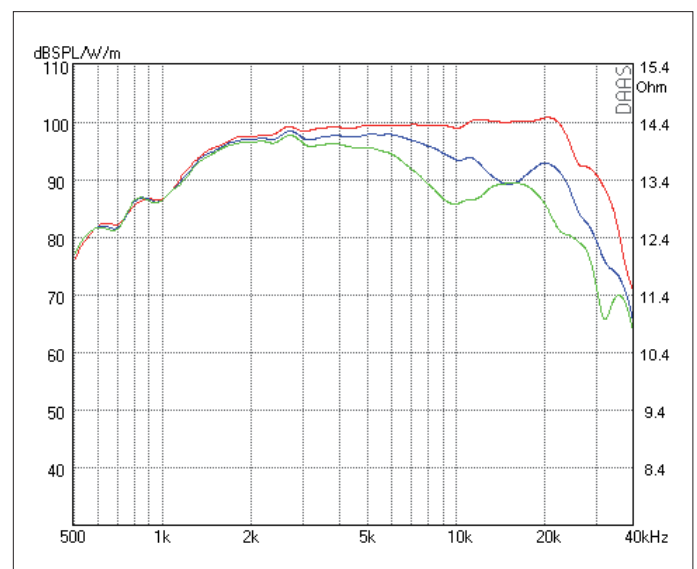
Impulse Response



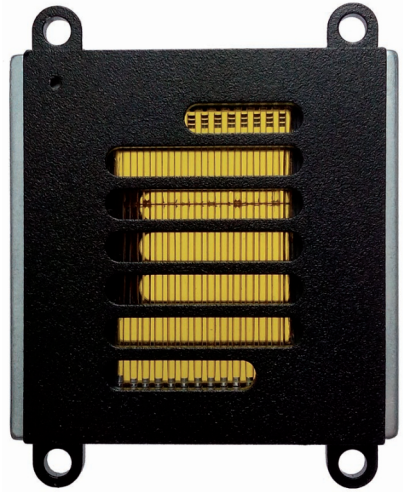
Step Response



SPL HORIZONTAL 0° - 15° - 30°



SPL VERTIKAL 0° - 5° - 15°



Dipol zur freien Aufstellung.

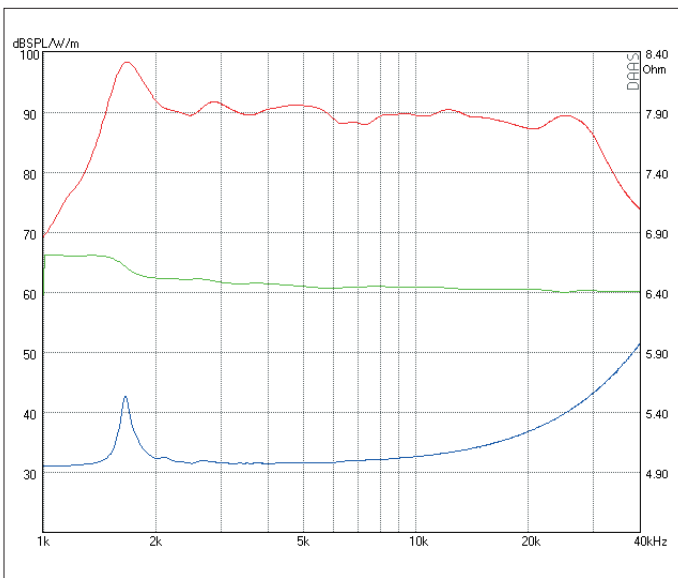
Einsatz als Super-Hochtöner für vorhandene Lautsprecher oder als frei aufgestellter Hochtöner für Dipol-Systeme.

- Keine Schallwand notwendig
- Linear bis 31 kHz

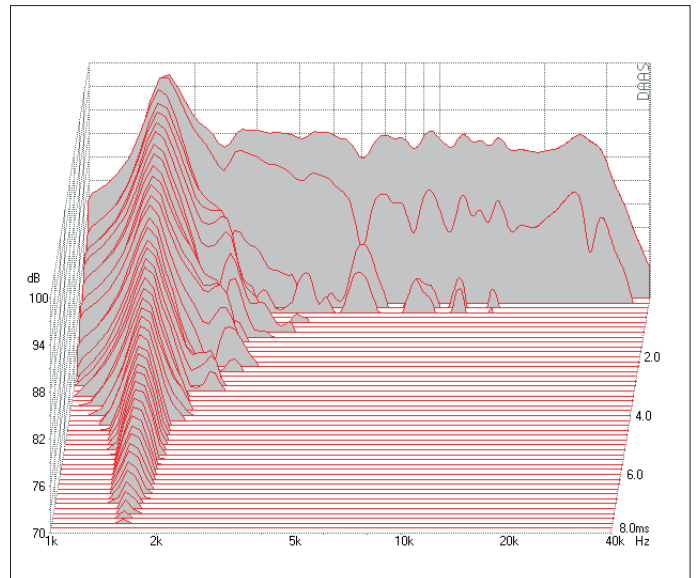
**Free-standing Dipole.**

**Usable as a super tweeter for existing speaker systems or as free standing tweeter in dipole systems.**

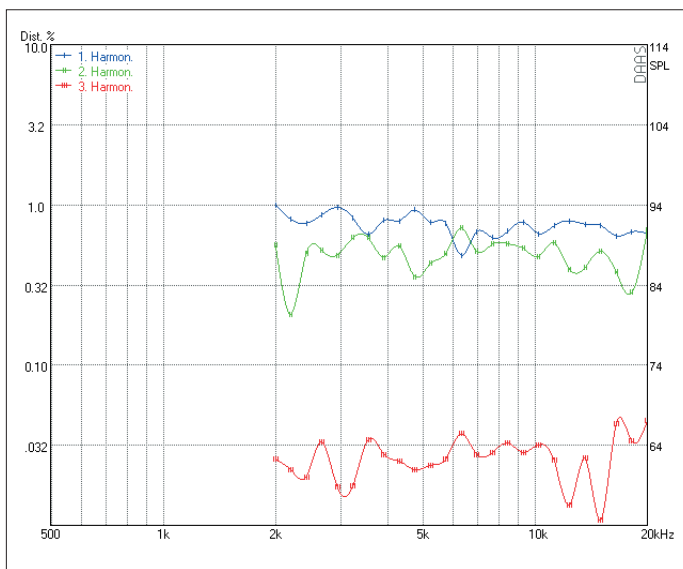
- No baffle required
- Frequency Range up to 31 kHz



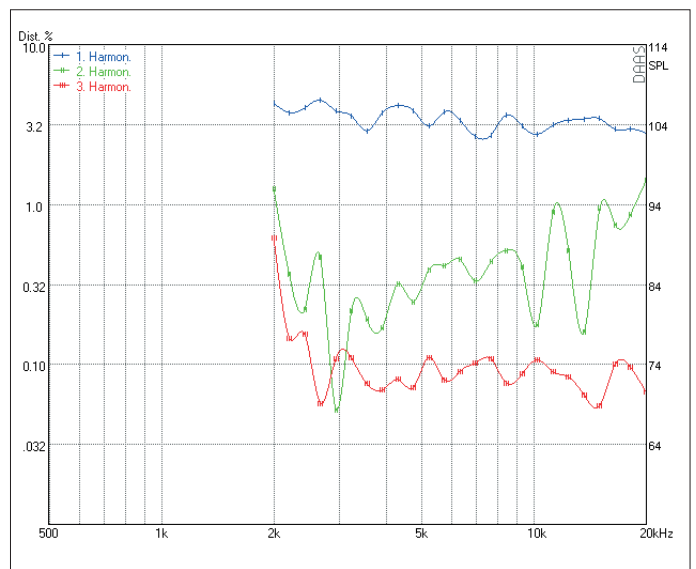
SPL 2.83 V - Phase - Impedance



Waterfall

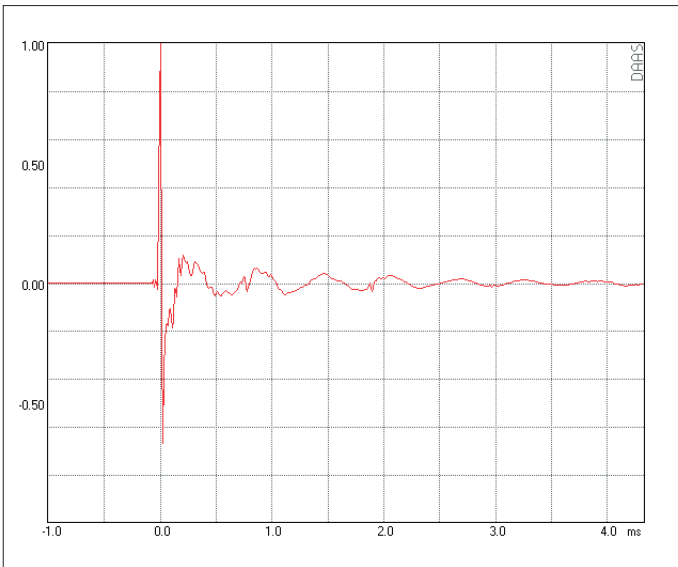
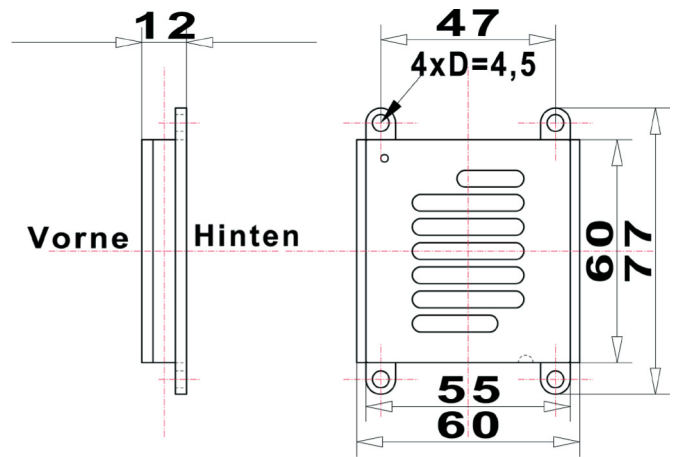


Harmonic Distortion 2.83 V

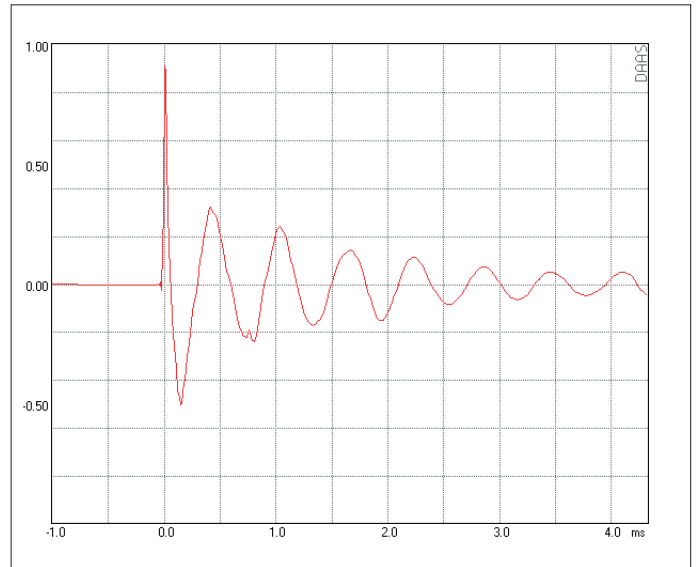


Harmonic Distortion 105 dB

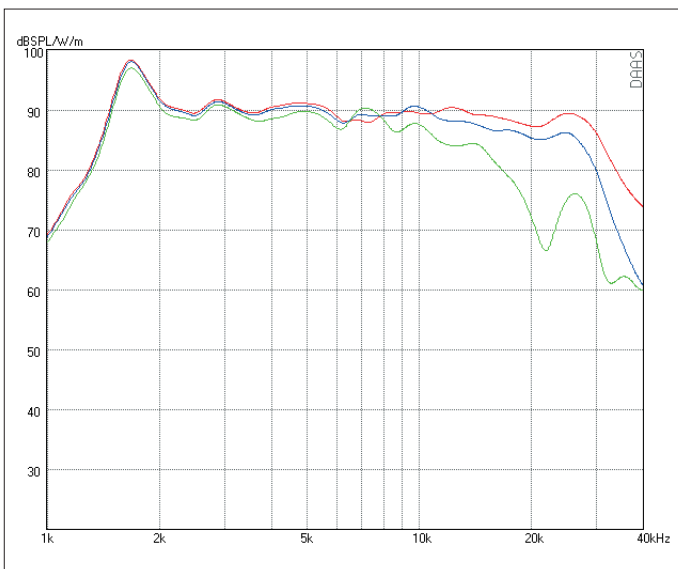
RESISTANCE	NOMINAL 4 OHM
Zo 5.2 OHM • Zmin 4.7 OHM • RE 4.7 OHM	
SENSITIVITY @ 2.83 V	90 dB
FREQUENCY RESPONSE / -6 dB	1300Hz - 31 kHz
POWER HANDLING	60 W
RESONANCE FREQUENCY / FS	1700 Hz
RECOMMENDED CROSSOVER / 6 dB	5000 Hz
RECOMMENDED CROSSOVER / 12 dB	4000 Hz
DISPERSION HORIZONTAL / 15 kHz / -6 dB	60°
DIAPHRAGM AREA	1260 mm <sup>2</sup>
MAGNET MATERIAL	NEODYMIUM
FACE PLATE	non



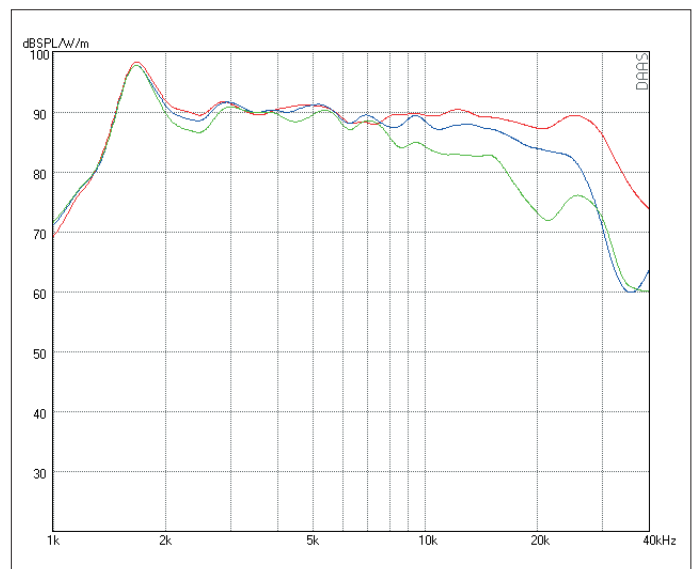
Impulse Response



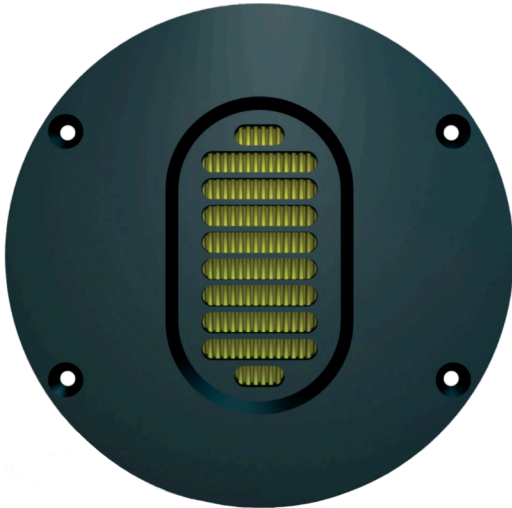
Step Response



SPL HORIZONTAL 0° - 15° - 30°



SPL VERTIKAL 0° - 5° - 15°

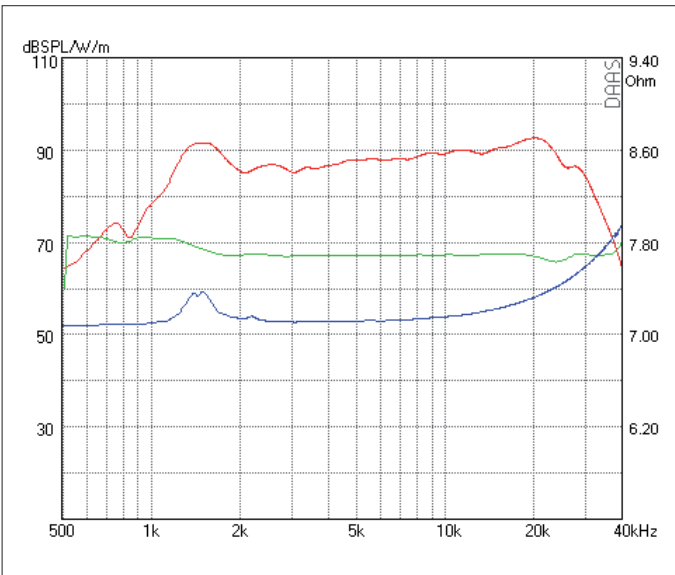


Dieser Dipol ist optimiert für den Einbau in eine Schallwand. Mit Resonanzlinearisierung ist eine Übernahmefrequenz von 2 kHz möglich. Der Wirkungsgrad passt zu den meisten Mitteltiefhörern.

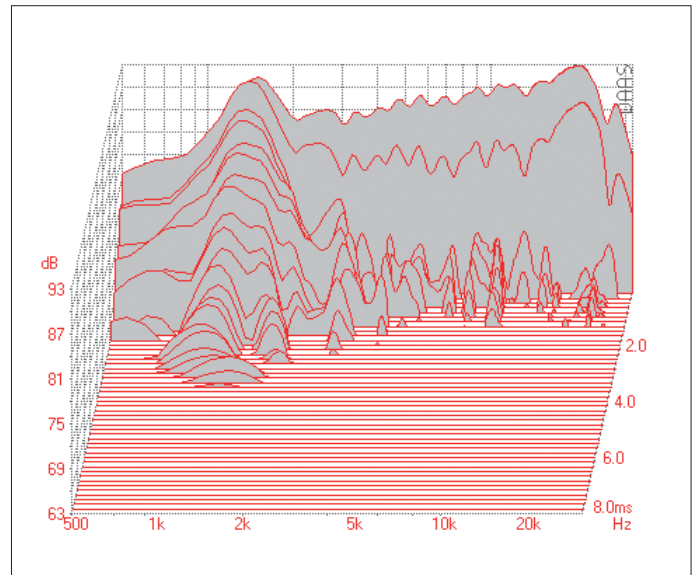
- Sehr linearer Frequenzgang • Unkritischer Impedanzverlauf
- Gutes Rundumstrahlverhalten
- Ausschwingverhalten optimiert auf Dipol-Einsatz

This dipole is optimized for installation in a baffle. With a resonance linearization crossover frequency of 2 kHz is possible. The efficiency fits with most mid-range drivers.

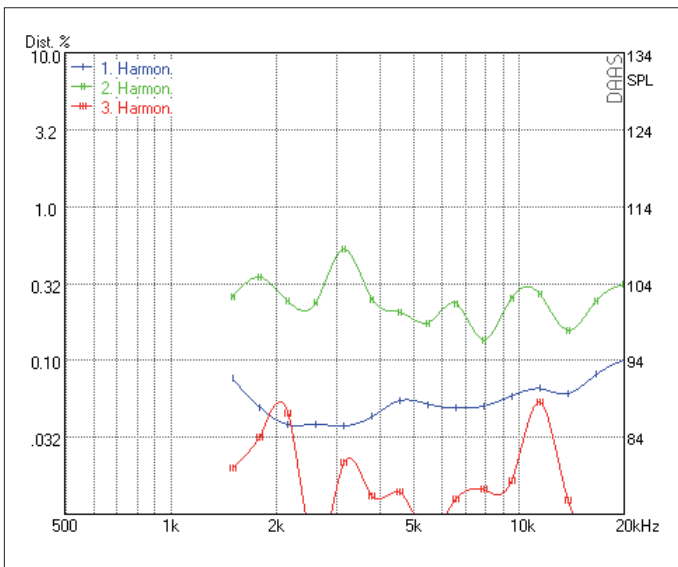
- Very low distortion • Very flat impedance curve
- Wide spread directivity • Low x-over frequency
- Swing-out behaviour optimized for dipole use



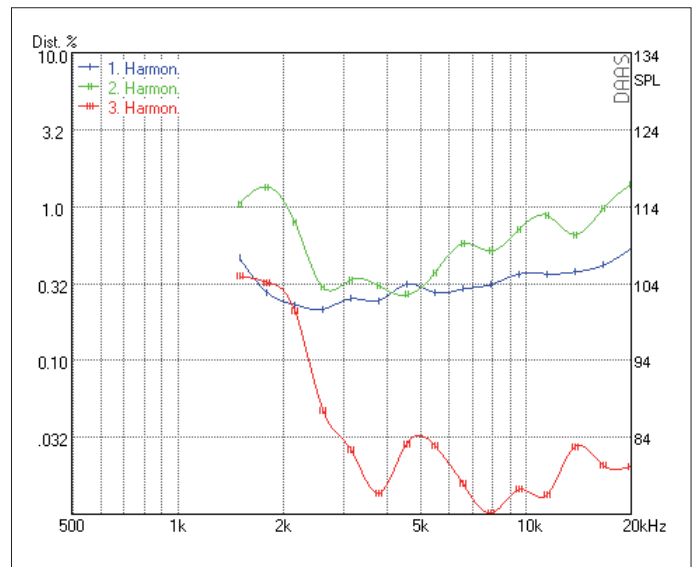
SPL 2.83 V - Phase - Impedance



Waterfall

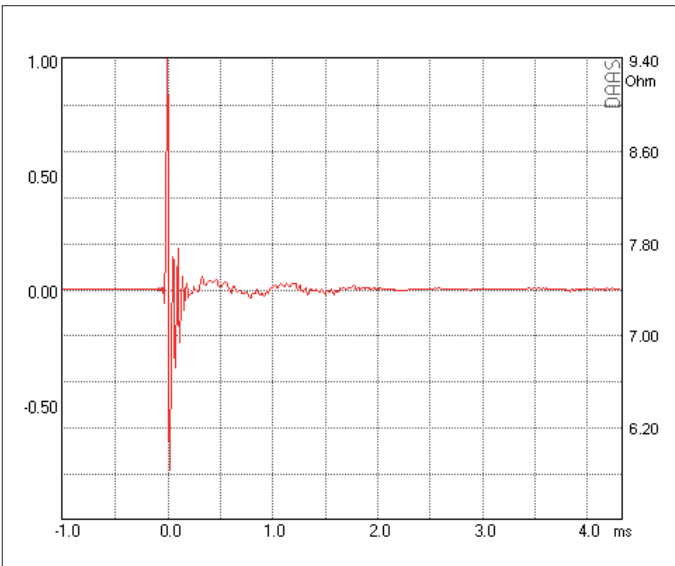
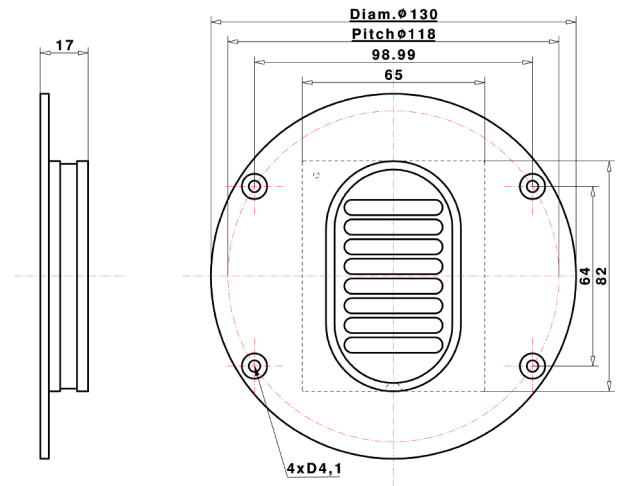


Harmonic Distortion 2.83 V

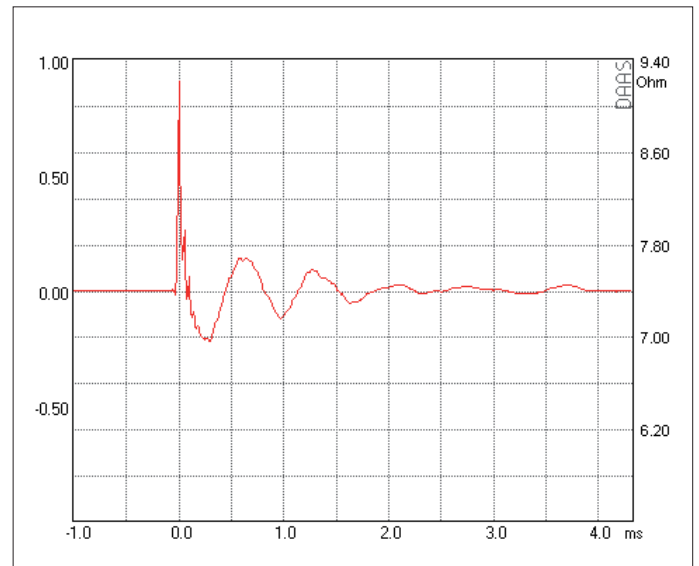


Harmonic Distortion 105 dB

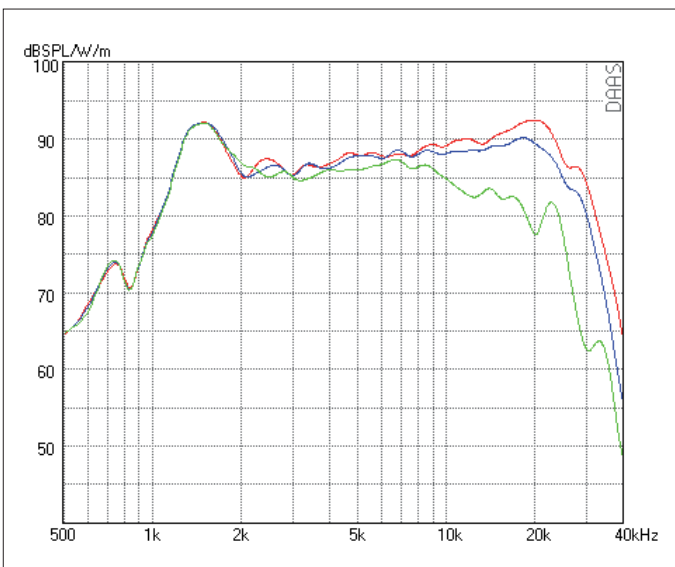
RESISTANCE	NOMINAL 8 OHM		
Zo 7.6 OHM	•	Zmin 7.1 OHM	• RE 7.1 OHM
SENSITIVITY @ 2.83 V	88 dB		
FREQUENCY RESPONSE / -6 dB	1200 Hz – 30 kHz		
POWER HANDLING	92 W		
RESONANCE FREQUENCY / FS	1500 Hz		
RECOMMENDED CROSSOVER / 6 dB	2600 Hz		
RECOMMENDED CROSSOVER / 12 dB	2400 Hz		
DISPERSION HORIZONTAL / 15 kHz / -6 dB	60°		
DIAPHRAGM AREA	2210 mm <sup>2</sup>		
MAGNET MATERIAL	NEODYMIUM		
FACE PLATE	3 mm Aluminum		



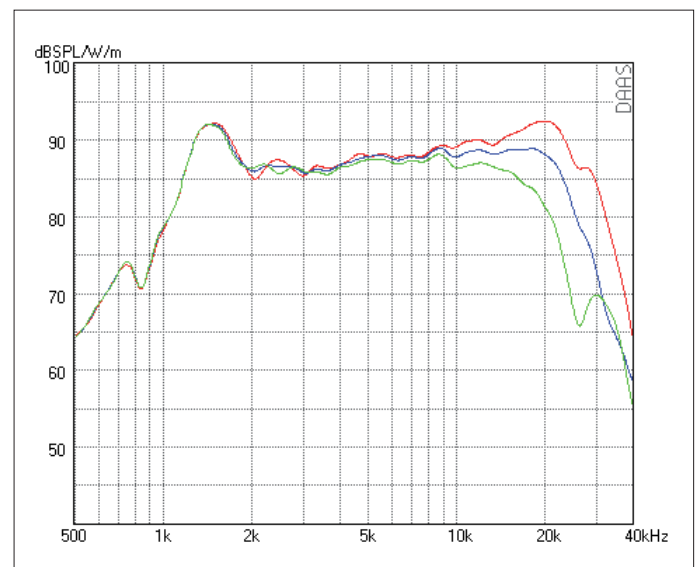
Impulse Response



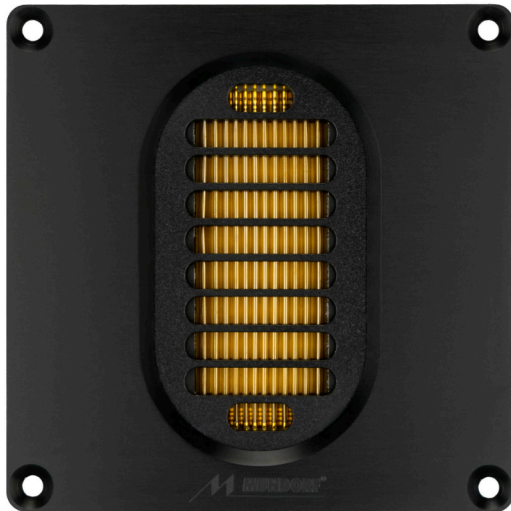
Step Response



SPL HORIZONTAL 0° - 15° - 30°



SPL VERTIKAL 0° - 5° - 15°

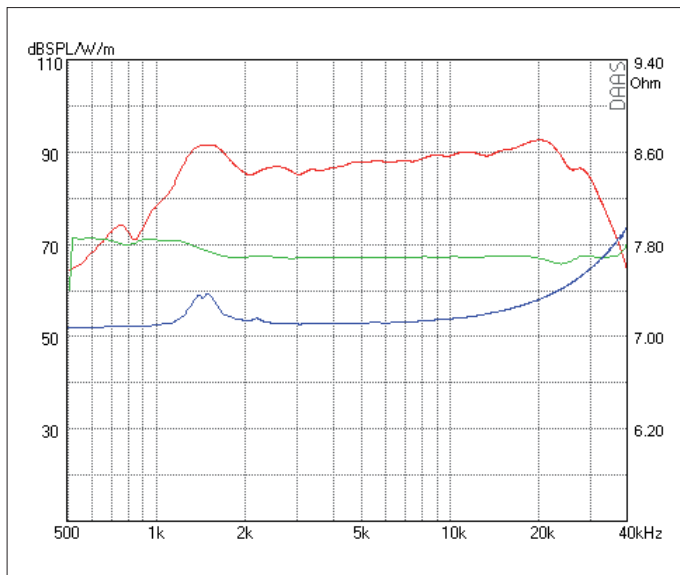


Dieser Dipol ist optimiert für den Einbau in eine Schallwand. Mit Resonanzlinearisierung ist eine Übernahmefrequenz von 2 kHz möglich. Der Wirkungsgrad passt zu den meisten Mitteltiefhörern.

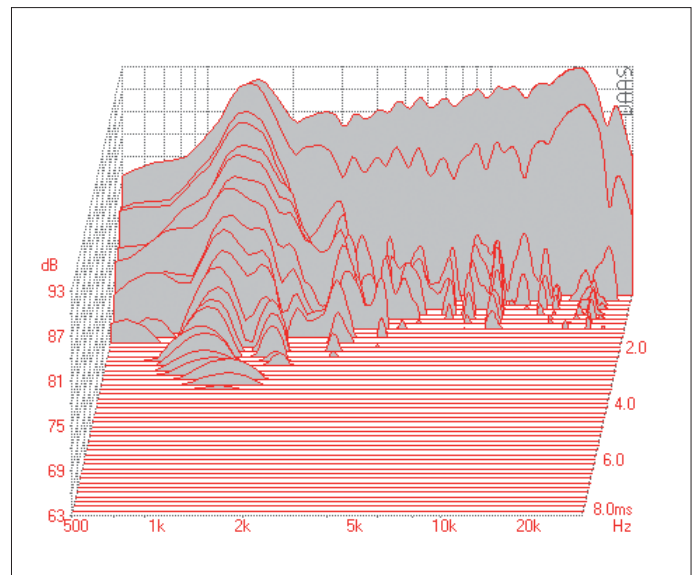
- Sehr linearer Frequenzgang • Unkritischer Impedanzverlauf
- Gutes Rundumstrahlverhalten
- Ausschwingverhalten optimiert auf Dipol-Einsatz

This dipole is optimized for installation in a baffle. With a resonance linearization crossover frequency of 2 kHz is possible. The efficiency fits with most mid-range drivers.

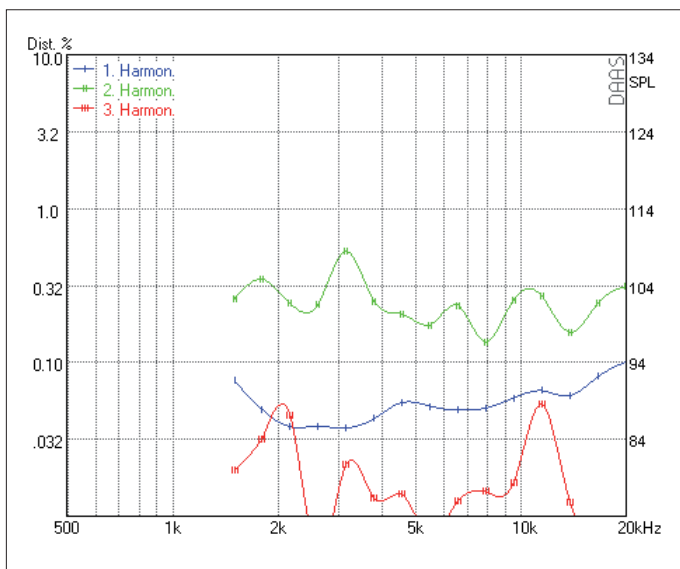
- Very low distortion • Very flat impedance curve
- Wide spread directivity • Low x-over frequency
- Swing- out behaviour optimized for dipole use



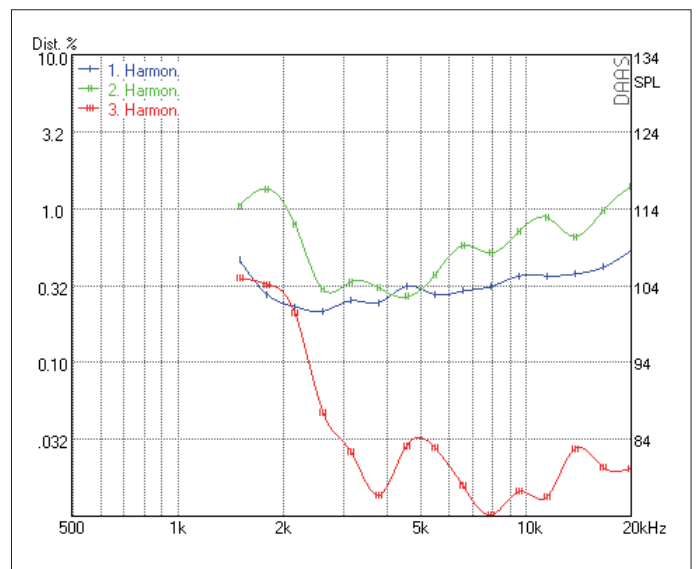
SPL 2.83 V - Phase - Impedance



Waterfall

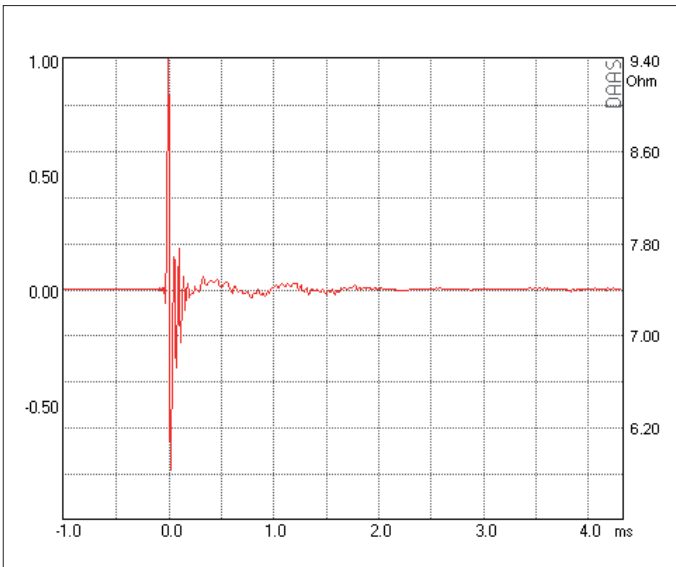
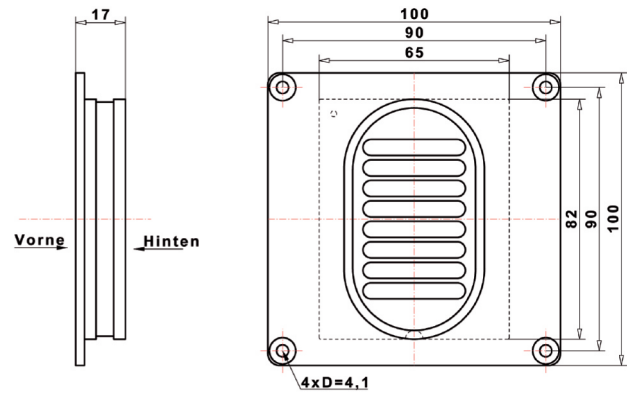


Harmonic Distortion 2.83 V

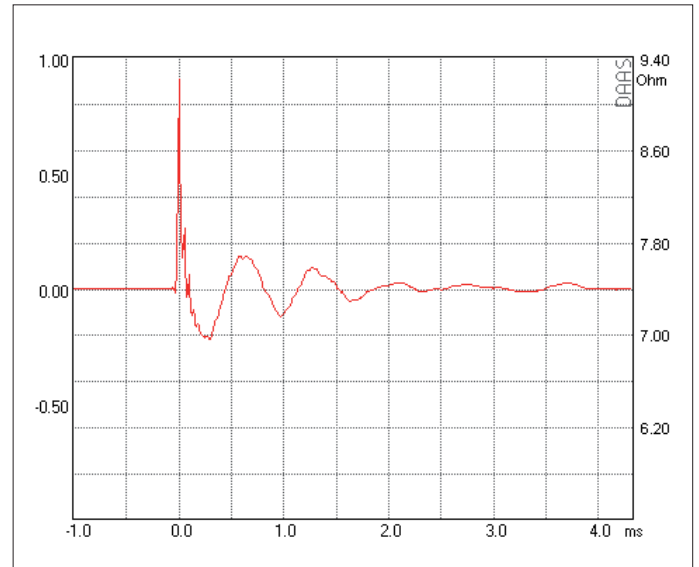


Harmonic Distortion 105 dB

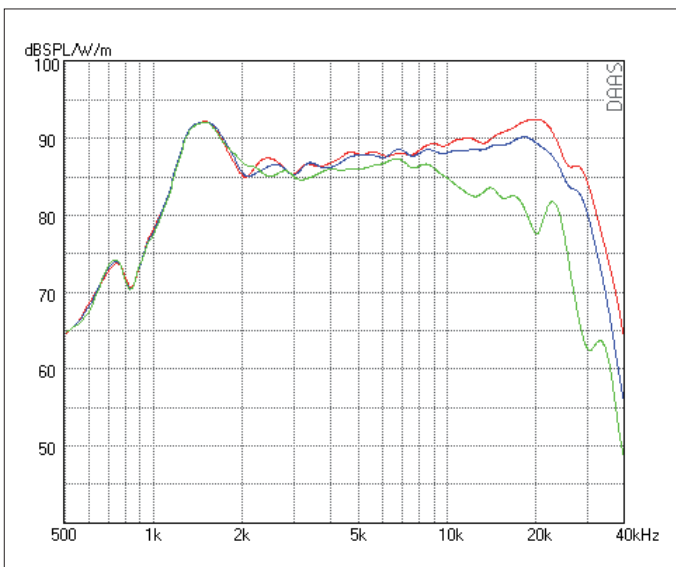
RESISTANCE	NOMINAL 8 OHM		
Z <sub>o</sub> 7.6 OHM	•	Z <sub>min</sub> 7.1 OHM	• RE 7.1 OHM
SENSITIVITY @ 2.83 V	88 dB		
FREQUENCY RESPONSE / -6 dB	1200 Hz – 30 kHz		
POWER HANDLING	92 W		
RESONANCE FREQUENCY / FS	1500 Hz		
RECOMMENDED CROSSOVER / 6 dB	2600 Hz		
RECOMMENDED CROSSOVER / 12 dB	2400 Hz		
DISPERSION HORIZONTAL / 15 kHz / -6 dB	60°		
DIAPHRAGM AREA	2210 mm <sup>2</sup>		
MAGNET MATERIAL	NEODYMIUM		
FACE PLATE	3 mm Aluminum		



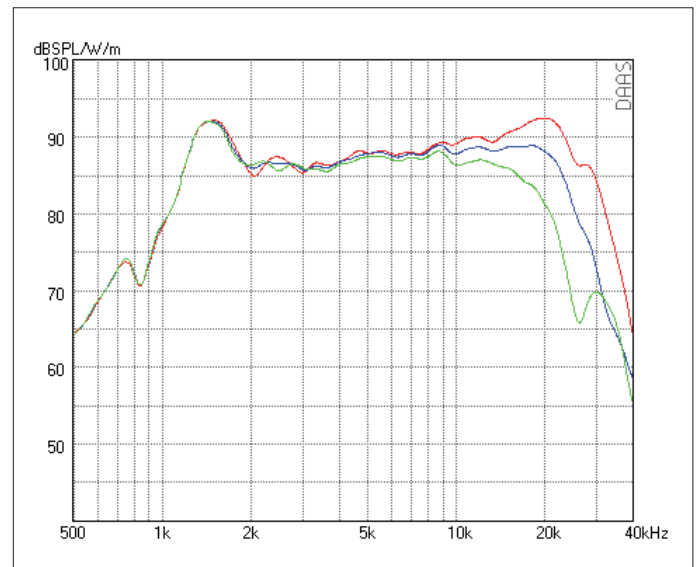
Impulse Response



Step Response

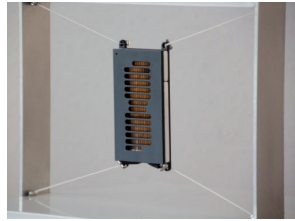
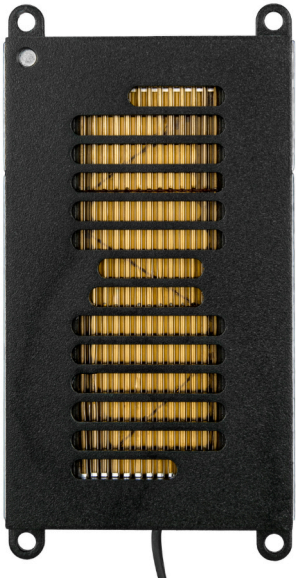


SPL HORIZONTAL 0° - 15° - 30°



SPL VERTIKAL 0° - 5° - 15°

**Tweeter · Hochtöner**  
**hifiAMT®25D1.1**



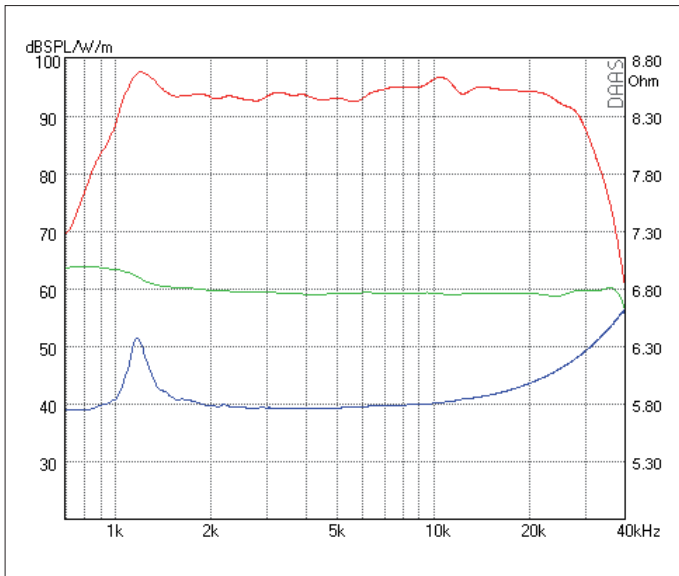
„Kundenlösung daudio, NL“  
 „Resolution of customer daudio, NL“

Dipol zur freien Aufstellung. Mit Resonanzlinearisierung ist eine Übernahmefrequenz von 2 kHz möglich. Mit einer Empfindlichkeit von 93 dB bereits für Röhrenfreunde geeignet.

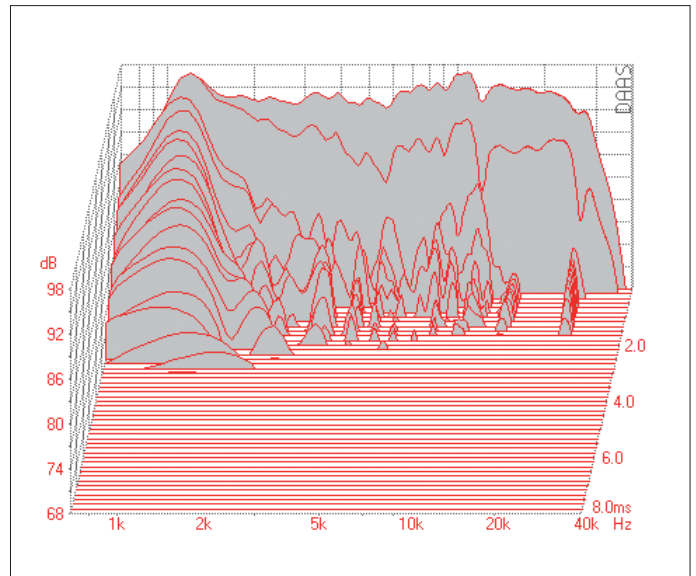
- Keine Schallwand notwendig
- Sehr linearer Frequenzgang
- Ausschwingverhalten optimiert auf Dipol- Einsatz

Free-standing Dipole. With a resonance linearization crossover frequency of 2 kHz is possible. With a sensitivity of 93 dB this AMT is suitable for tube friends.

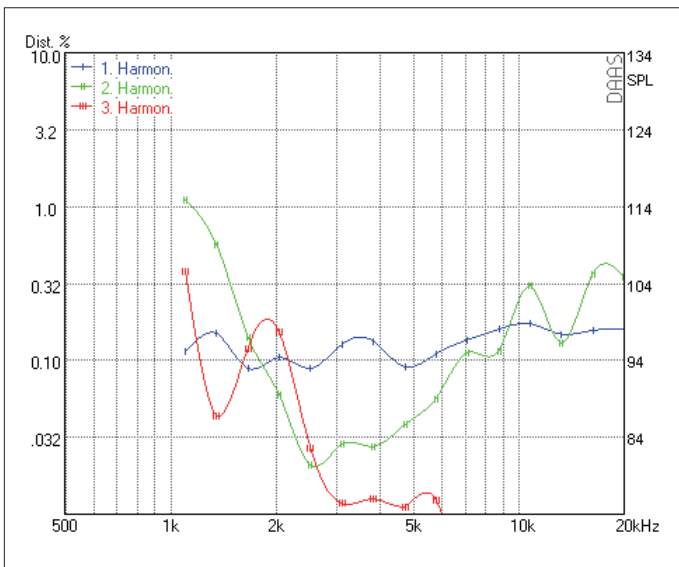
- No baffle required
- Very flat frequency response
- Swing- out behaviour optimized for dipole use



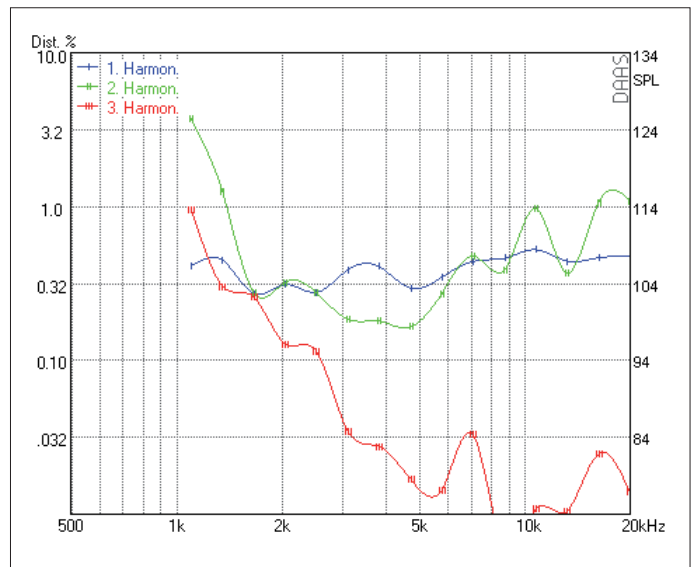
SPL 2.83 V - Phase - Impedance



Waterfall



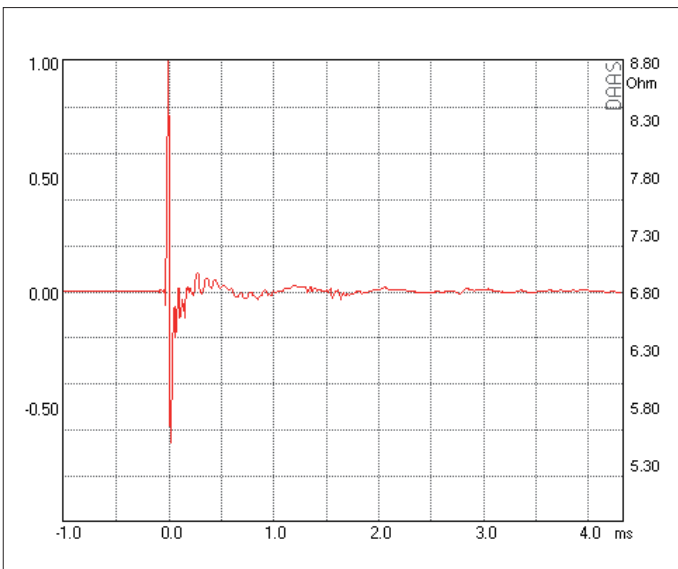
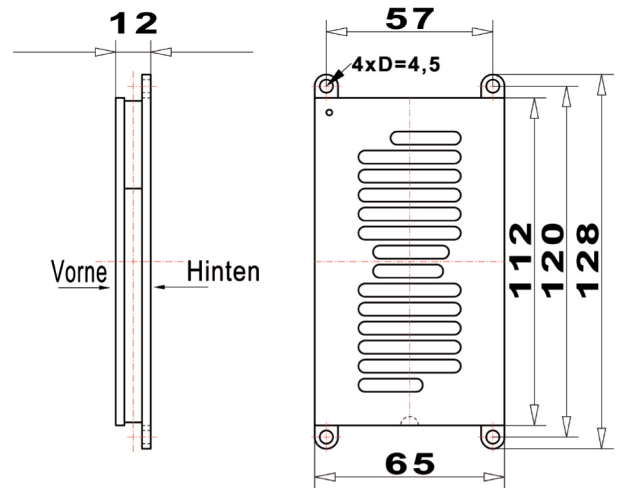
Harmonic Distortion 2.83 V



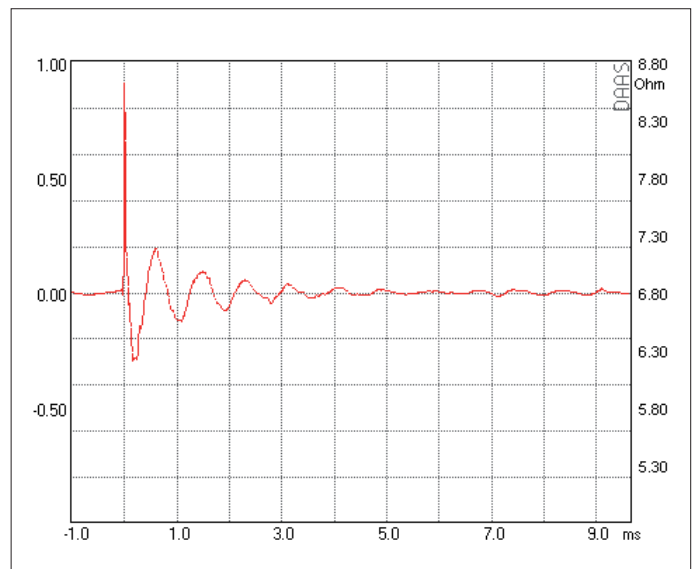
Harmonic Distortion 105 dB



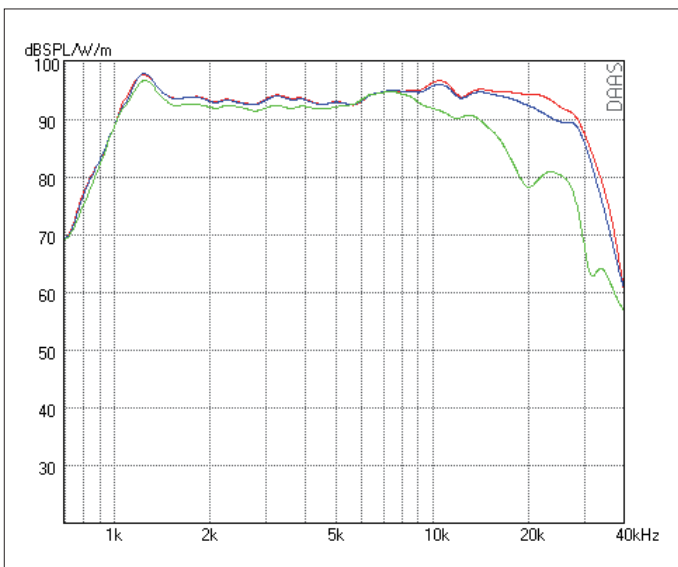
RESISTANCE	NOMINAL 6 OHM
Z <sub>o</sub> 5.8 OHM • Z <sub>min</sub> 5.3 OHM • RE 5.3 OHM	
SENSITIVITY @ 2.83 V	92 dB
FREQUENCY RESPONSE / -6 dB	1100 Hz – 30 kHz
POWER HANDLING	135 W
RESONANCE FREQUENCY / FS	1400 Hz
RECOMMENDED CROSSOVER / 6 dB	2500 Hz
RECOMMENDED CROSSOVER / 12 dB	2300 Hz
DISPERSION HORIZONTAL / 18 kHz / -6 dB	60°
DIAPHRAGM AREA	6464 mm <sup>2</sup>
MAGNET MATERIAL	NEODYMIUM
FACE PLATE	non



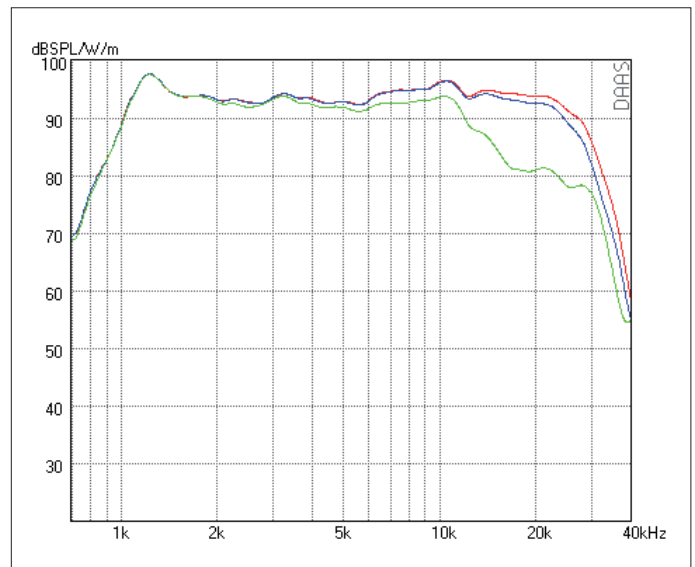
Impulse Response



Step Response



SPL HORIZONTAL 0° - 15° - 30°



SPL VERTIKAL 0° - 5° - 15°

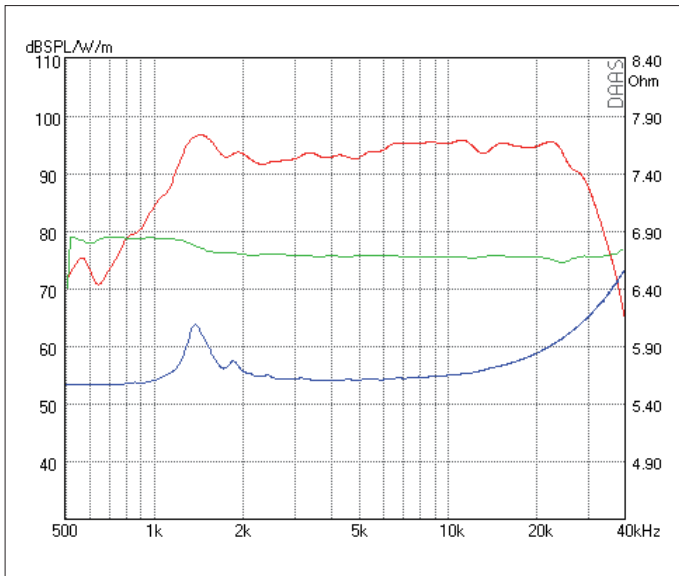


Dieser Dipol ist optimiert für den Einbau in eine Schallwand. Mit Resonanzlinearisierung ist eine Übernahmefrequenz von 2 kHz möglich. Mit einer Empfindlichkeit von 93 dB bereits für Röhrenfreunde geeignet.

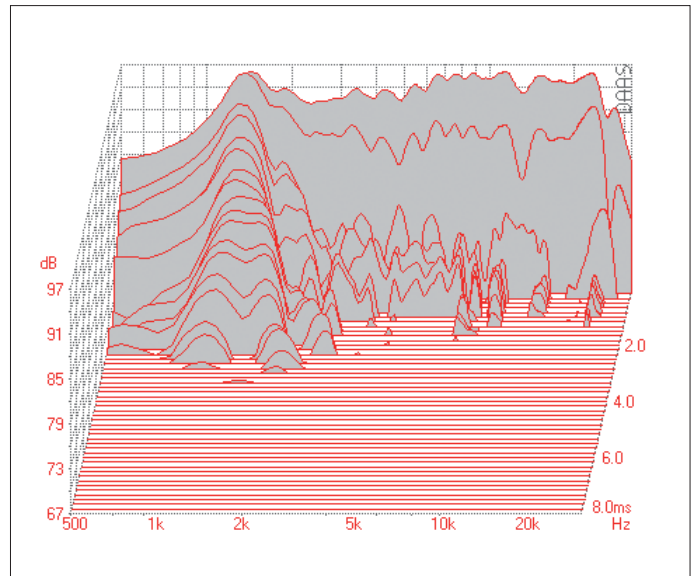
- Sehr linearer Frequenzgang • Unkritischer Impedanzverlauf
- Ausschwingverhalten optimiert auf Dipol- Einsatz
- Hoher Wirkungsgrad

This dipole is optimized for installation in a baffle. With a resonance linearization crossover frequency of 2 kHz is possible. With a sensitivity of 93 dB for this AMT is suitable for tube friends.

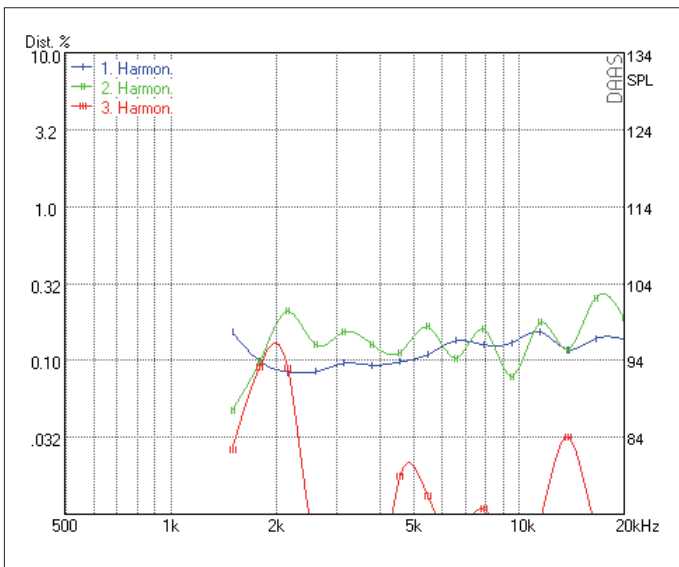
- Very low distortion • Very flat impedance curve
- Swing- out behaviour optimized for dipole use • High sensitivity



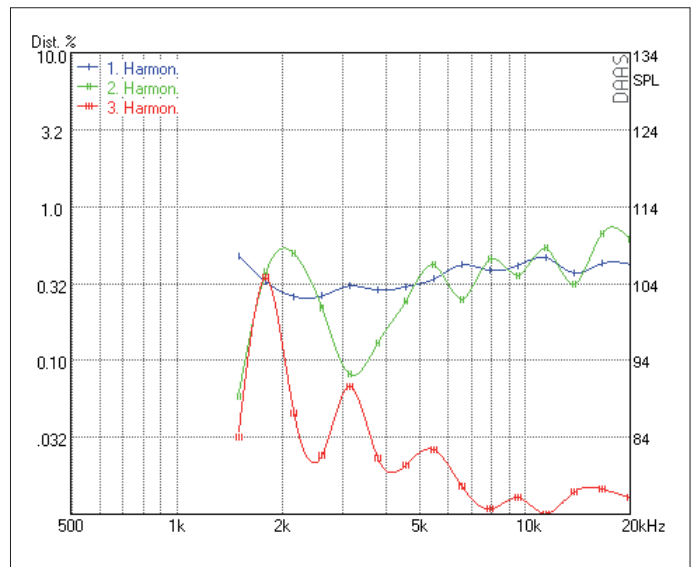
SPL 2.83 V - Phase - Impedance



Waterfall

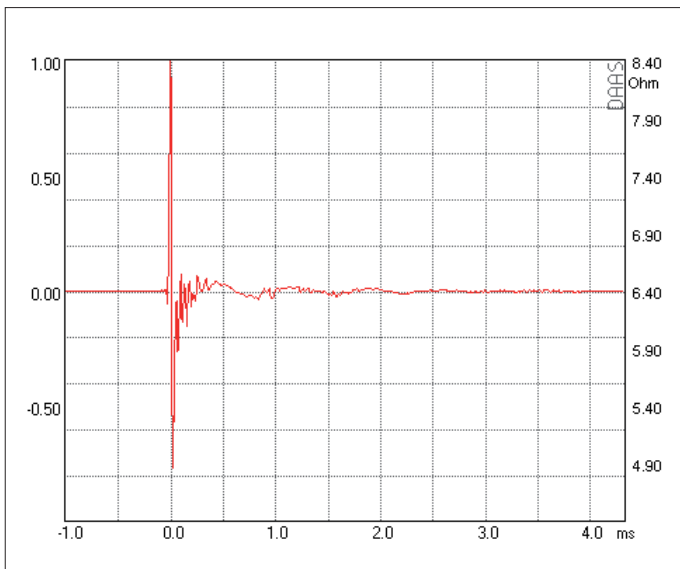
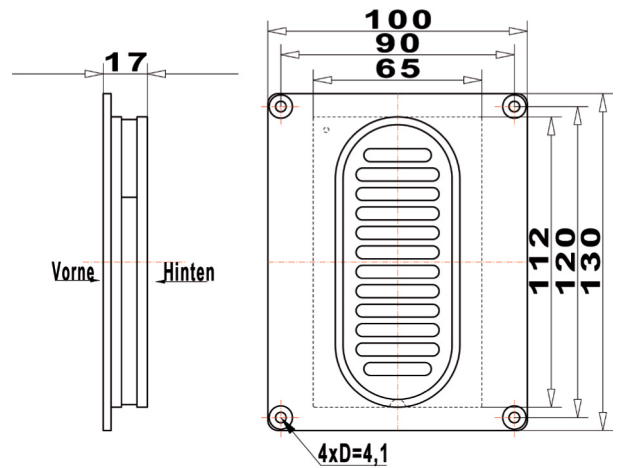


Harmonic Distortion 2.83 V

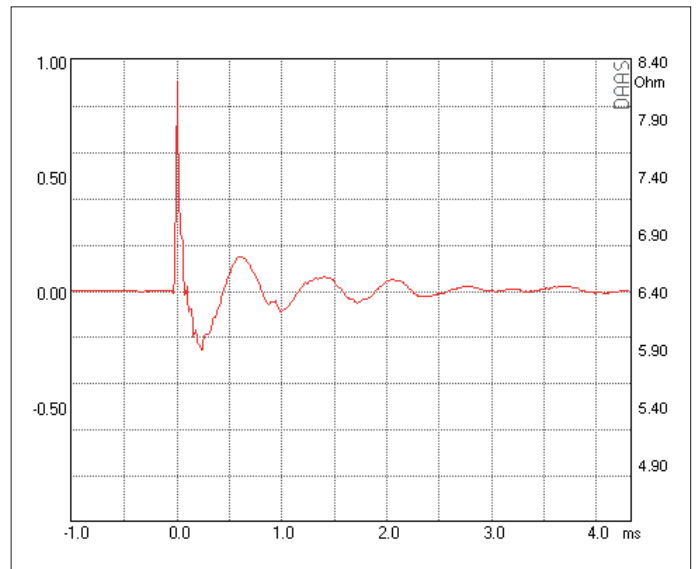


Harmonic Distortion 105 dB

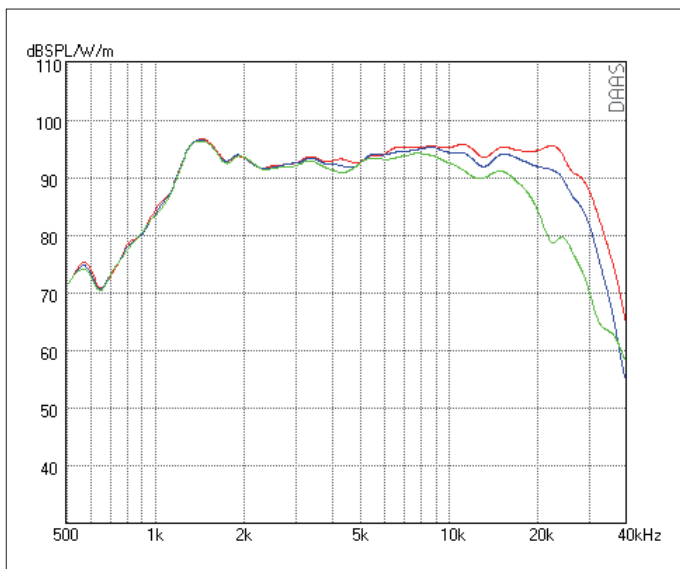
RESISTANCE	NOMINAL 6 OHM		
Z <sub>0</sub> 5.8 OHM • Z <sub>min</sub> 5.3 OHM • RE 5.3 OHM			
SENSITIVITY @ 2.83 V	93 dB		
FREQUENCY RESPONSE / -6 dB	1100 Hz – 30 kHz		
POWER HANDLING	135 W		
RESONANCE FREQUENCY / FS	1400 Hz		
RECOMMENDED CROSSOVER / 6 dB	2500 Hz		
RECOMMENDED CROSSOVER / 12 dB	2300 Hz		
DISPERSION HORIZONTAL / 15 kHz / -6 dB	60°		
DIAPHRAGM AREA	6464 mm <sup>2</sup>		
MAGNET MATERIAL	NEODYMIUM		
FACE PLATE	3 mm Aluminum		



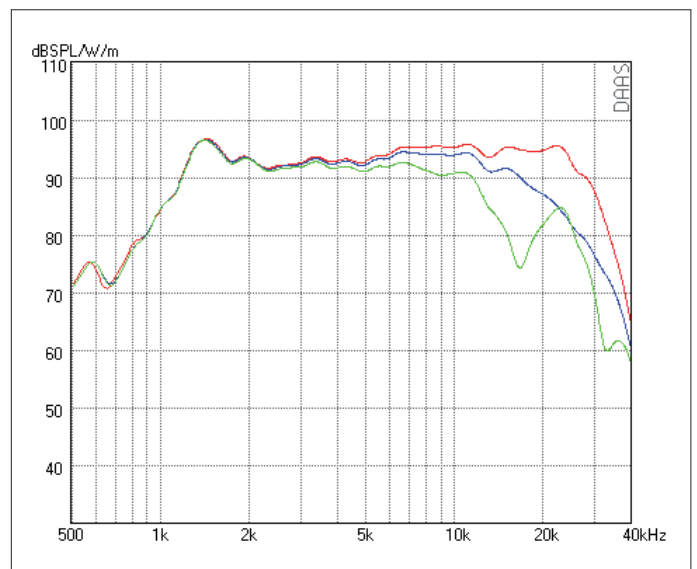
Impulse Response



Step Response

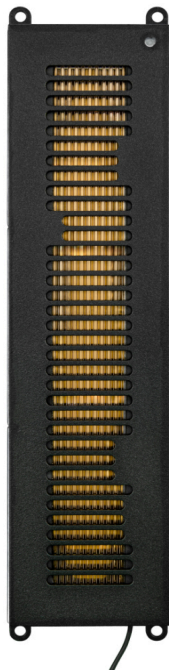


SPL HORIZONTAL 0° - 15° - 30°



SPL VERTIKAL 0° - 5° - 15°

**Tweeter · Hochtöner**  
**hifiAMT®27D1.1**

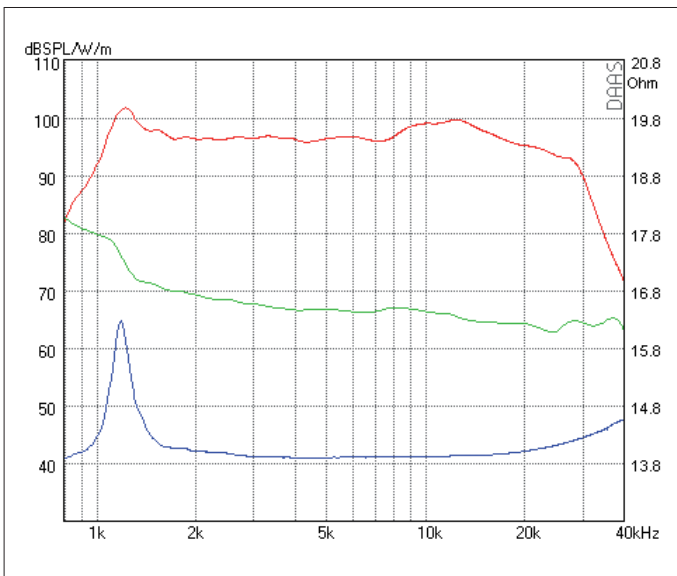


Dipol zur freien Aufstellung. Mit Resonanzlinearisierung ist eine Übernahmefrequenz von 1.8 kHz möglich. Die Parallelschaltung von drei AMT's übereinander ermöglicht den Aufbau eines Wohnzimmer-Line-Arrays.

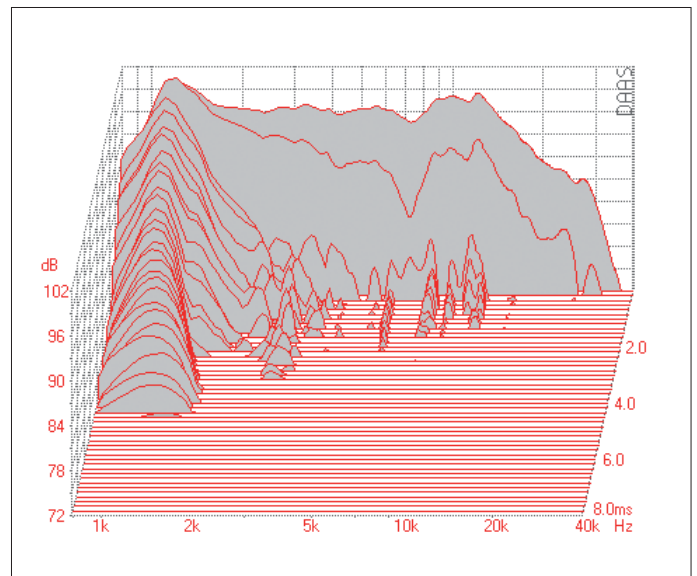
- Keine Schallwand notwendig
- Sehr linearer Frequenzgang • 14 Ohm, 97 dB
- Ausschwingverhalten optimiert auf Dipol- Einsatz

Free-standing Dipole. With a resonance linearization crossover frequency of 1.8 kHz is possible. The parallel connection of three AMT's one above the other allows the construction of a "living room line array".

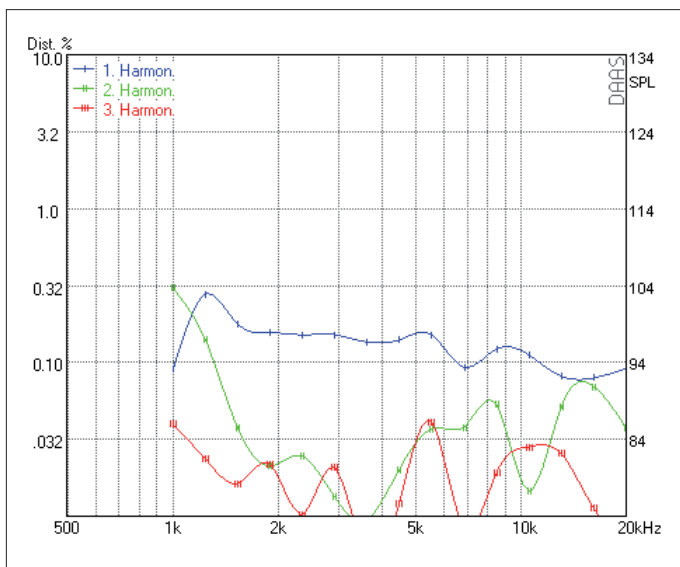
- No baffle required • Very flat frequency response
- 14 Ohm, 97 dB • Swing-out behaviour optimized for dipole use



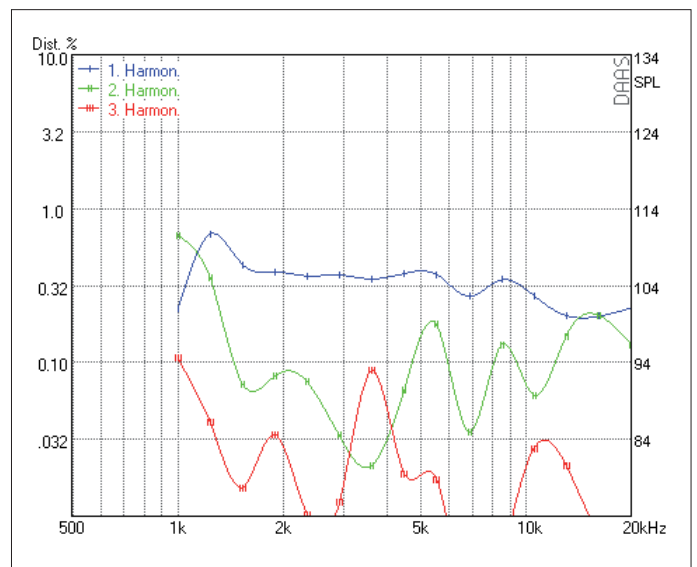
SPL 2.83 V - Phase - Impedance



Waterfall

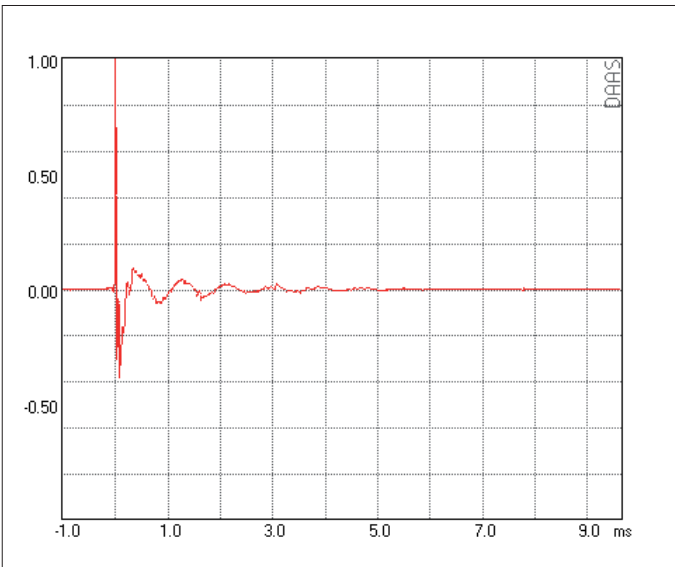
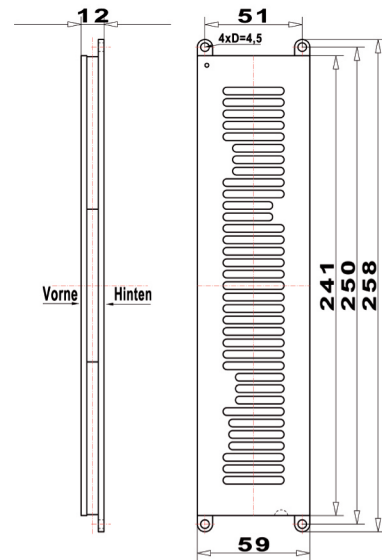


Harmonic Distortion 2.83 V

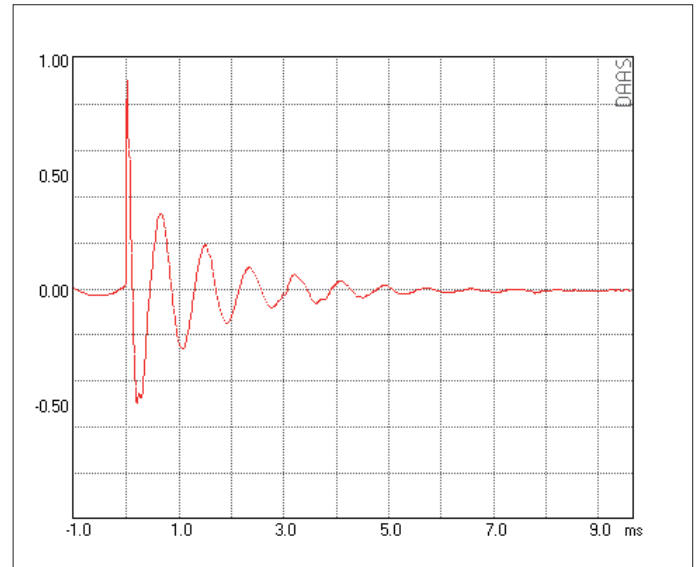


Harmonic Distortion 105 dB

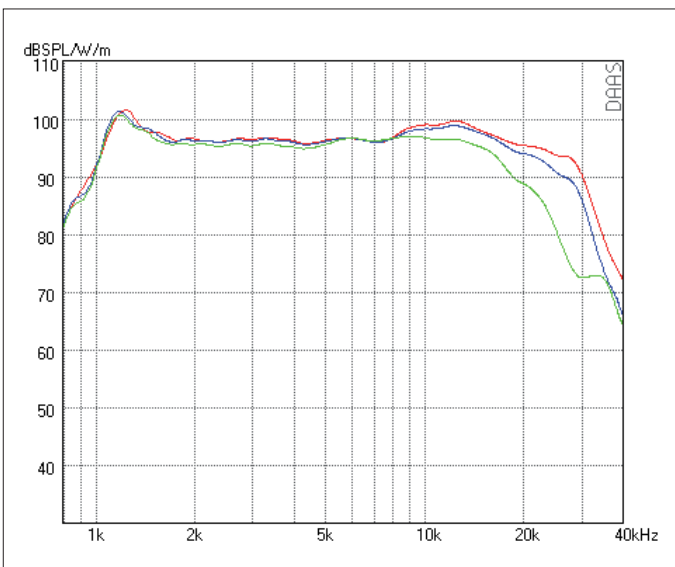
RESISTANCE	NOMINAL 14 OHM
Zo 15.2 OHM • Zmin 12.4 OHM • RE 12.4 OHM	
SENSITIVITY @ 2.83 V	97 dB
FREQUENCY RESPONSE / -6 dB	1000 Hz – 29 kHz
POWER HANDLING	190 W
RESONANCE FREQUENCY / FS	1150 Hz
RECOMMENDED CROSSOVER / 6 dB	2400 Hz
RECOMMENDED CROSSOVER / 12 dB	1800 Hz
DISPERSION HORIZONTAL / 15 kHz / -6 dB	55°
DIAPHRAGM AREA	8910 mm <sup>2</sup>
MAGNET MATERIAL	NEODYMIUM
FACE PLATE	non



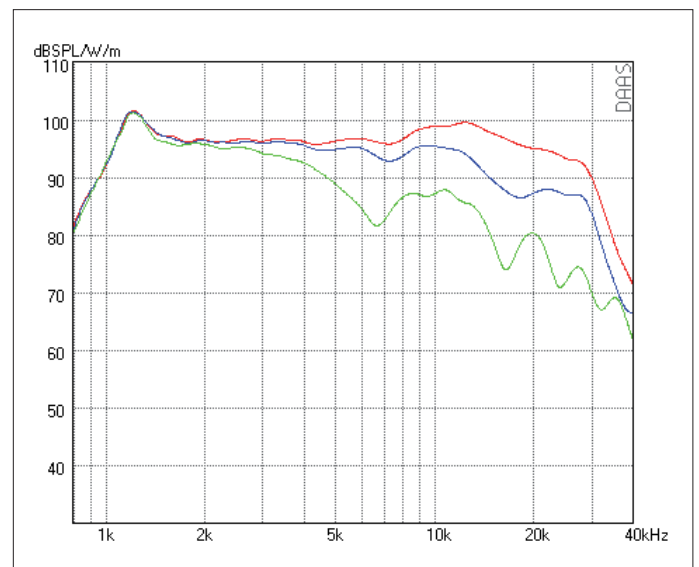
Impulse Response



Step Response



SPL HORIZONTAL 0° - 15° - 30°



SPL VERTIKAL 0° - 5° - 15°

## Einführung Mundorf *hifi*AMT Introduction of Mundorf *hifi*AMT

Mundorf bietet heute zweifelslos die weltweit größte Auswahl an Air Motion Transformer (AMT) für die unterschiedlichsten Anwendungen und Anforderungen an. In der vorliegenden Broschüre werden die aktuellen Modelle der Mundorf HiFi, Monitor und Hochwirkungsgrad-AMT vorgestellt. Allen gemeinsam ist das exzellente Impulsverhalten und die ungewöhnliche Verzerrungsarmut der Musikwiedergabe! Die Unterschiede liegen vor allem im Übertragungsbereich, dem Schalldruck und dem Bündelungsverhalten.

Die als Dipol-AMT entwickelten Modelle wurden in zwei Linien optimiert. Zum einen Dipol-Varianten, die für eine freistehende Montage optimiert wurden. Sie ähneln durch diese in ihrem Impulsverhalten einem, in offener Schallwand montierten Tiefmitteltöner. Für derartige Konzepte optimal geeignet sind AMT17D1.1, AMT25D1.1 und AMT27D1.1 .

Eine weitere Reihe an Dipolen ist für die Montage in nach hinten offenen Schallwänden optimiert: AMT23D6.1-C, AMT23D6.1-R, AMT25D6.1-R .

Der Dipol AMT17D hat sich außerdem hervorragend als ergänzender Superhohtöner bewährt, der sich mittels mitgelieferten Komponenten akustisch und mechanisch leicht mit jeder Lautsprecherbox kombinieren lässt und freistehend auf ihr platziert werden kann.

Der AMT29 ist mit seiner hohen Empfindlichkeit von 100 dB, seiner außergewöhnlichen Linearität und seinem ausgedehnten Frequenzbereich die Synthese aus MUNDORF HIFI AMT und MUNDORF PRO AMT.

Mundorf offers undoubtedly today's largest selection of Air Motion Transformer (AMT) worldwide. Its different lines were developed for certain applications and requirements. The present brochure introduces the current lines of Mundorf HiFi AMT tweeters, of which all have two superior key properties in common: An excellent transient response and an outstanding low distortion ratio! The differences lie mainly in their frequency ranges, sound pressure levels and dispersion angles.

The dipole AMT models come in two lines. One line is optimized for a free-standing installation. Their transient response is very similar to a woofer's transient response when mounted in an open baffle. Ideally suited for such concepts are AMT17D1.1, AMT25D1.1 and AMT27D1.1 .

A second line of dipole AMTs is optimized for matching open-baffles concepts perfectly. Please look up AMT23D6.1-C, AMT23D6.1-R, AMT25D6.1-R .

Dipole AMT17D has also proved itself as an outstanding supplementary super tweeter, which can easily be matched with any given speaker. Components for the perfect acoustical adjustment and appropriate stands for free-standing on-top placement are available, too.

Finally, with its high 100 dB sensitivity, an exceptional linearity and its extended frequency range, AMT29 represents the perfect synthesis of MUNDORF HIFI AMT and MUNDORF PRO AMT models.

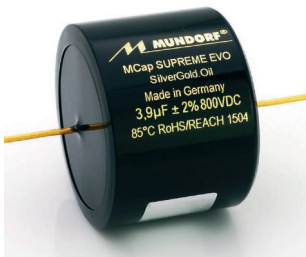


### MUNDORF *proAMT*®

Linienstrahler aus Prinzip.  
135db ohne Verzerrungen.  
1000W aber sicher.  
Think AMT!

### MUNDORF *proAMT*®

Line source by principle.  
135db at crystal clear.  
1000W cool and safe.  
Think AMT!



### MUNDORF Audioelemente

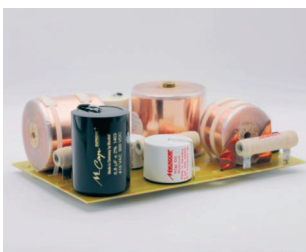
Entdecken Sie unser umfassendes Angebot an Netzteil und Audio Kondensatoren, Spulen, Widerständen und Accessoires für Lautsprecher, Verstärker und Kabel Hersteller...und DIY!

Wir fertigen unsere Spulen seit 1985 im Haus und können daher Sonderlösungen mit Losgröße Eins anbieten. Auch unsere weltbekannten Kondensatoren, wie ECap, MCap EVO und SUPREME SilberGold, fertigen wir auf Wunsch nach Ihren Vorgaben kostengünstig, schnell und flexibel in Deutschland.

### MUNDORF Fidelity Components

Discover our wide range of power and audio capacitors, coils, resistors and audio accessories for loudspeaker, amplifier and cable manufacturers...and of course DIY!

The MCoil, handmade in-house since 1985, can be customized with lot size of one. And also our legendary capacitors, for instance ECap, MCap EVO and SUPREME SilverGold can be built to your dreams in Germany at reasonable costs, lead-times and quantities.



### MUNDORF Dienstleistungen & Lösungen für Hersteller

Frequenzweichen nach Herstellervorgaben von bester Budget Qualität bis zur audiophilen Extraklasse produzieren wir ebenfalls hier, zu wettbewerbsfähigen Preisen.

### MUNDORF *services and OEM solutions for manufacturers.*

In-house turnkey crossover network manufacturing from best budget quality to audiophile top-level at competitive prices.

